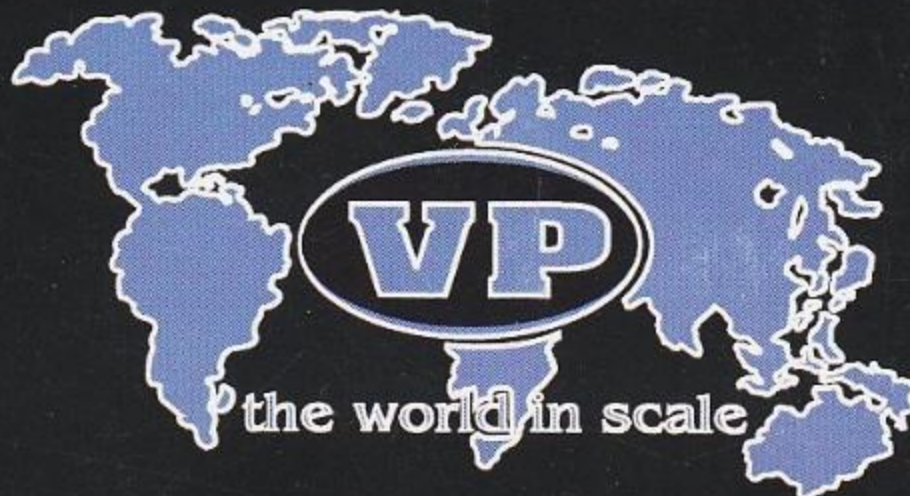


# VERLINDEN PRODUCTIONS

## Modeling



## Magazine

In this issue

**SUPERDIORAMA :**  
**DAY OF INFAMY-PEARL HARBOR 1/72 Scale**

**1:35 DIORAMAS**

**HOT LZ VIETNAM**

**AGAINST ALL ODDS ARNHEM 1944**

**"ACTION" MOVIE SET**

**"FRIEND OR FOE ?" FRANCE 1940 & 1944**

**THE LAST WALTZ EASTFRONT 1944**

**IN THE FIELD :**  
**RIVER CROSSING**

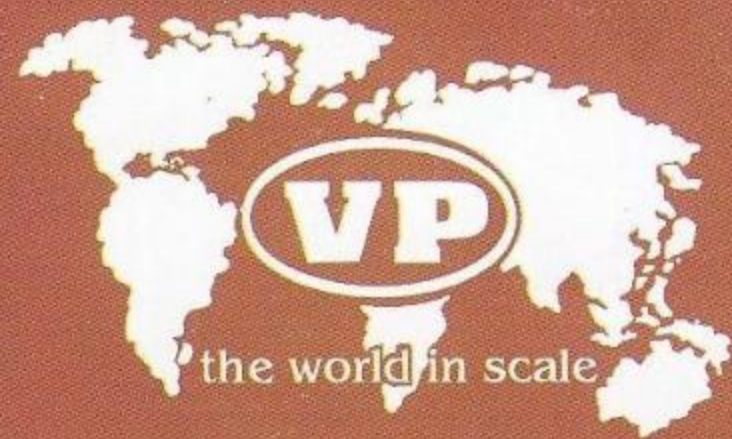
**FIGURE SHOWCASE**



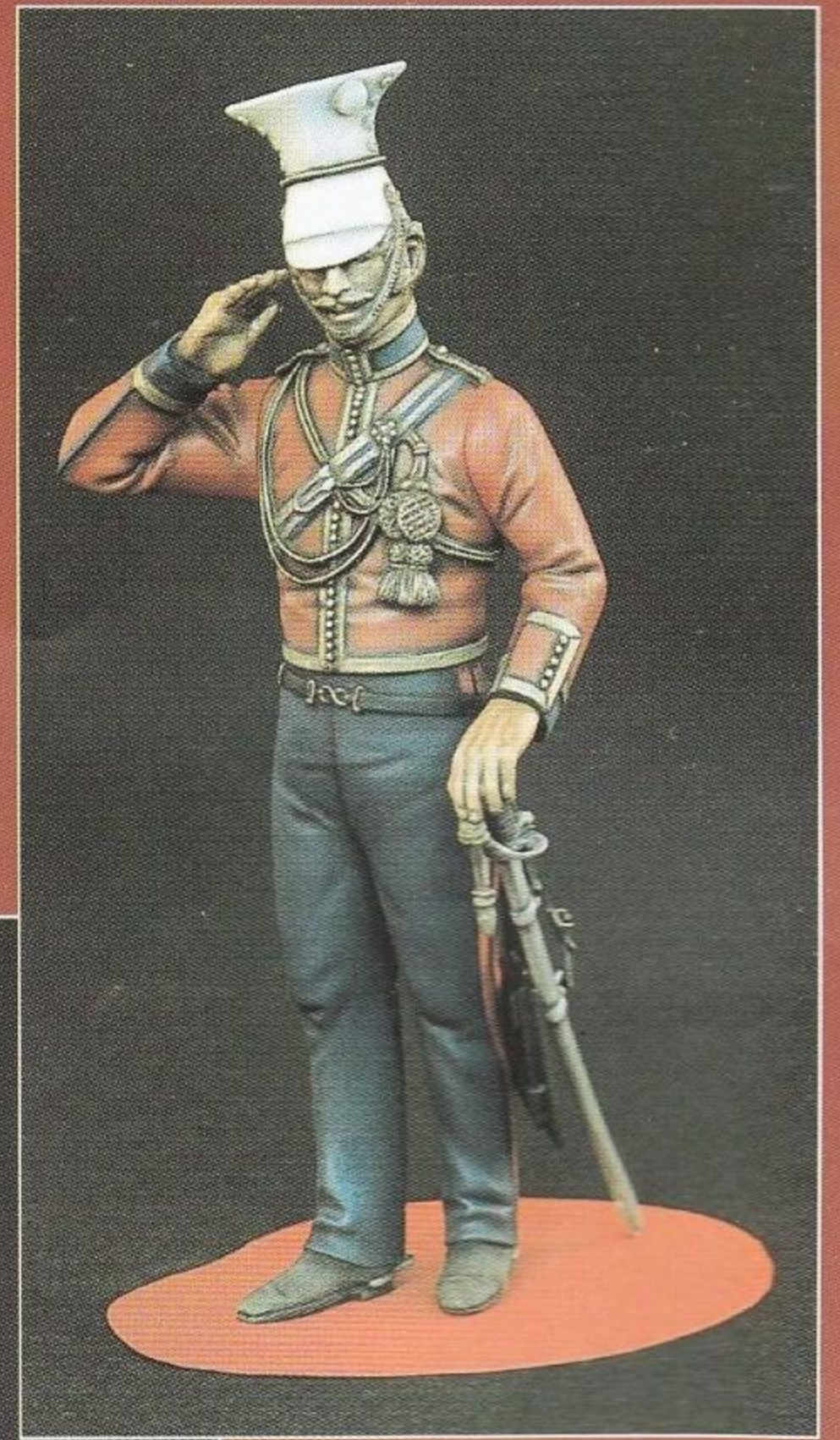
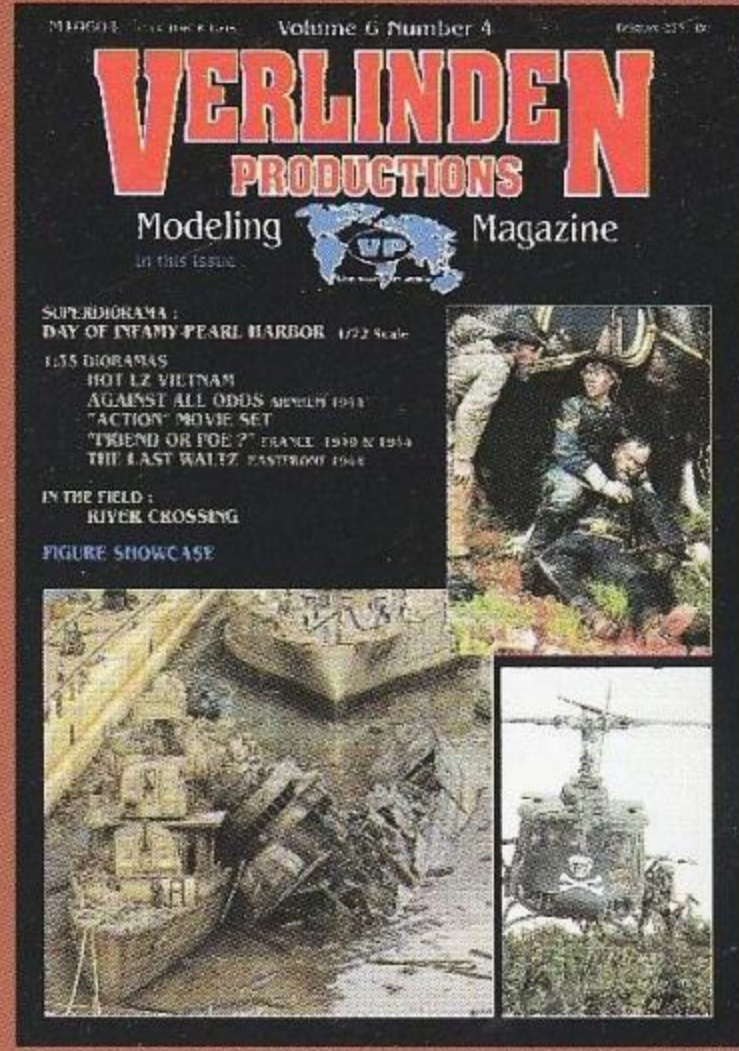




1069 TIGER CREW ENGINE REPAIR 1:35



**VERLINDEN PRODUCTIONS**

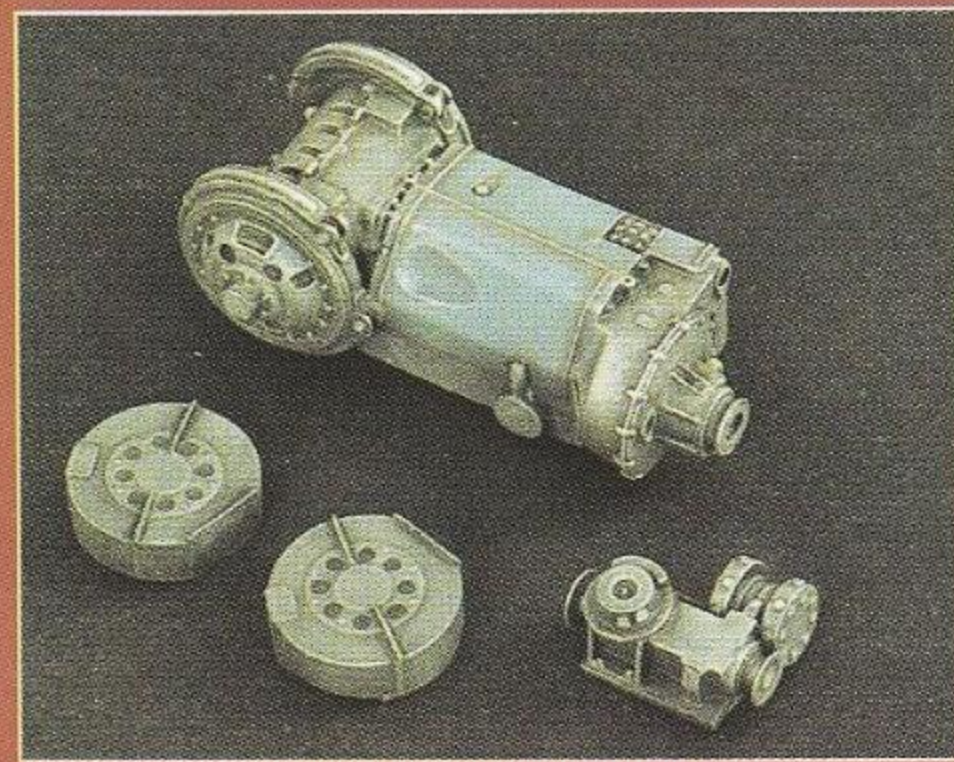


1061 OFFICER 16TH. LANCER ALIWAJ 1846 120mm



1066 GERMAN SOLDIERS WWII AT BREAK 1:35

1068 15 CM NEBELWERFER ROCKETS 1:35



1063 PANTHER TANK TRANSMISSION 1:35



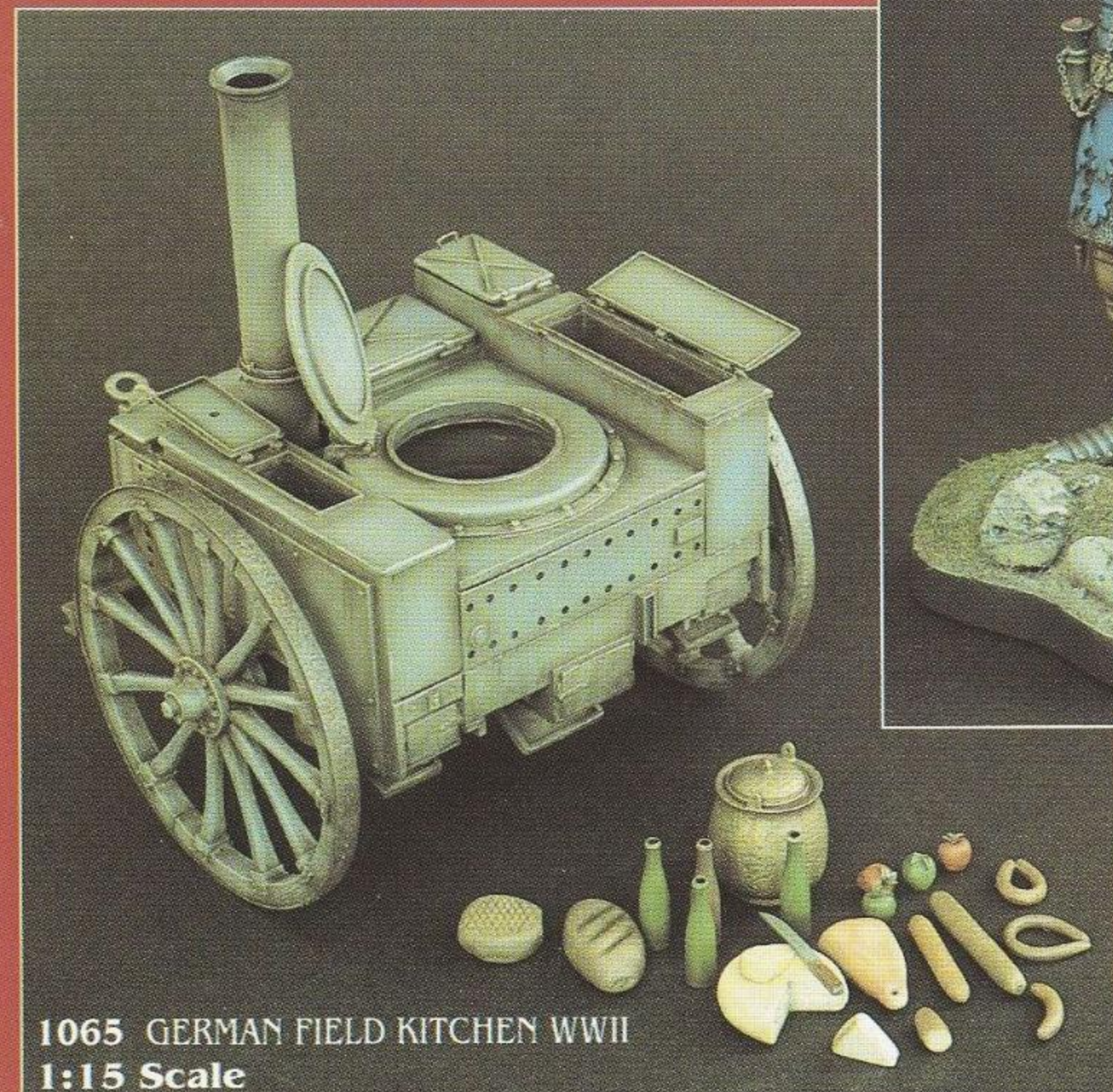
1067 CAPTAIN 3RD. HUSSARS NAPOLEONIC 120mm



1059 PANZER IV TRANSMISSION 1:35

1064 GERMAN GENERALS WWII 1:35

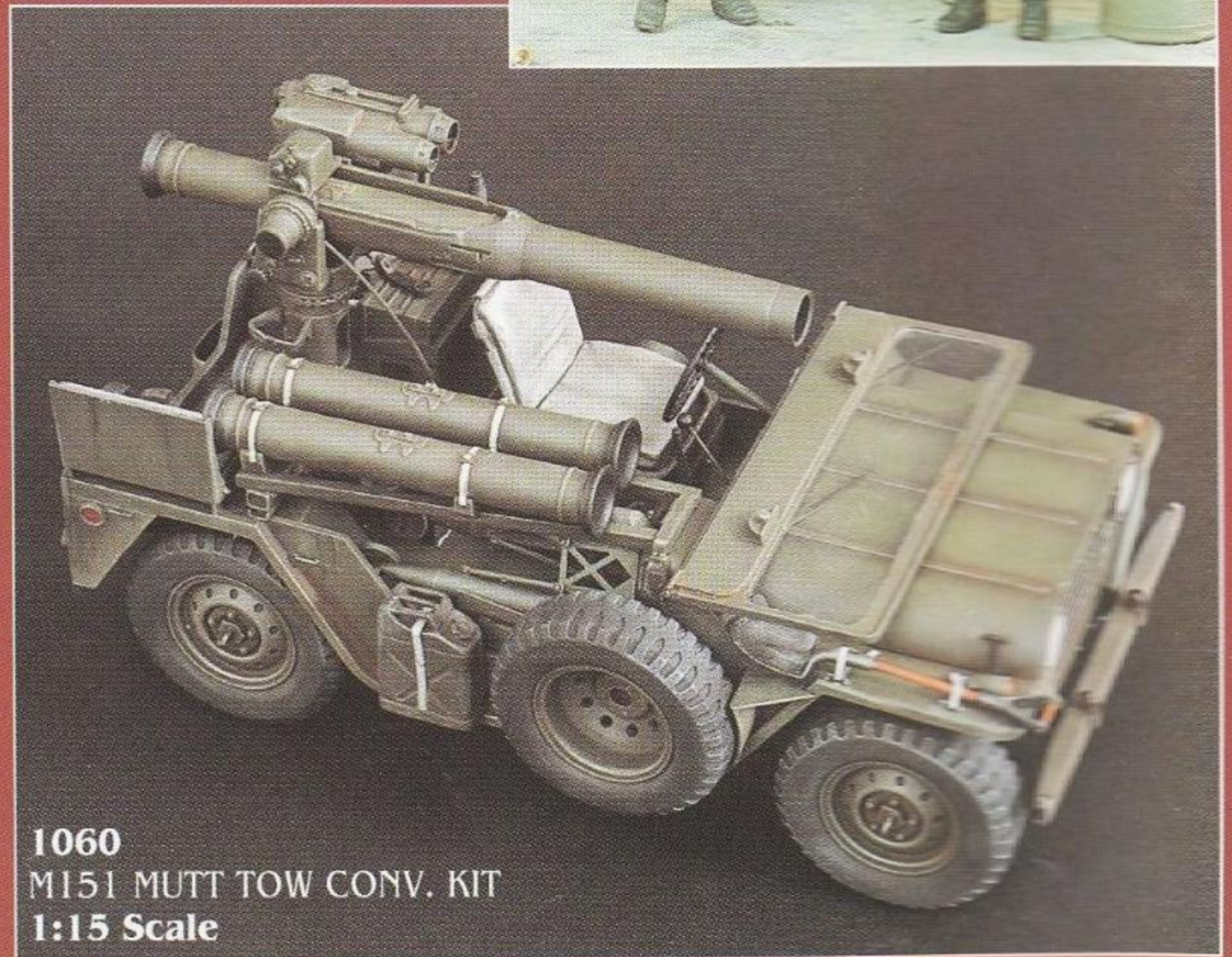
**New Items  
Oktober 1995**



1065 GERMAN FIELD KITCHEN WWII 1:15 Scale



1062 HUNGARIAN KNIGHT Ca. 1360 120mm



1060 M151 MUTT TOW CONV. KIT 1:15 Scale





**VERLINDEN PRODUCTIONS  
VERLINDEN PUBLICATIONS**

Modeling books & accessories

Volume 6 Number 4

EDITED  
By  
VP GRAPHICS

SALES  
Advertising, Sales & Marketing  
Wim VERLINDEN  
Judith DE BIE



François VERLINDEN



Bob LETTERMAN

EDITORIAL OFFICE  
Ondernemersstraat 4,  
KMO-Zone Mallekot  
B-2500 LIER / BELGIUM

\*\*

VERLINDEN PRODUCTIONS Modeling Magazine is a quarterly publication by VERLINDEN PUBLICATIONS, a division of VERLINDEN & STOK nv.

Ondernemersstraat 4, KMO-Zone Mallekot,  
B-2500 LIER, BELGIUM  
Phone (03) 480 65 26  
Fax (03) 489 29 26

The contents of this publication, including all articles, designs, plans, drawings and photographs are all copyright VERLINDEN PUBLICATIONS unless otherwise indicated. This publication may therefore not be reproduced in part or in whole without the written consent of the publisher, except in the case of brief quotations in reviews. The Publisher cannot be held responsible for unsolicited material which, if not accepted, will be returned only if postage and wrappings are provided. Photographs and articles accepted are paid for upon publication. If, for some reason, this publication is discontinued no refunds will be paid by the Publisher to subscription holders nor can the Publisher be held responsible for any damage resulting from the discontinuation of this magazine.

VERLINDEN PRODUCTIONS Modeling Magazine is printed in Belgium by Drukkerij DE PEUTER nv. Herentals. Color repro by SCANBO, Beerzel, Belgium.

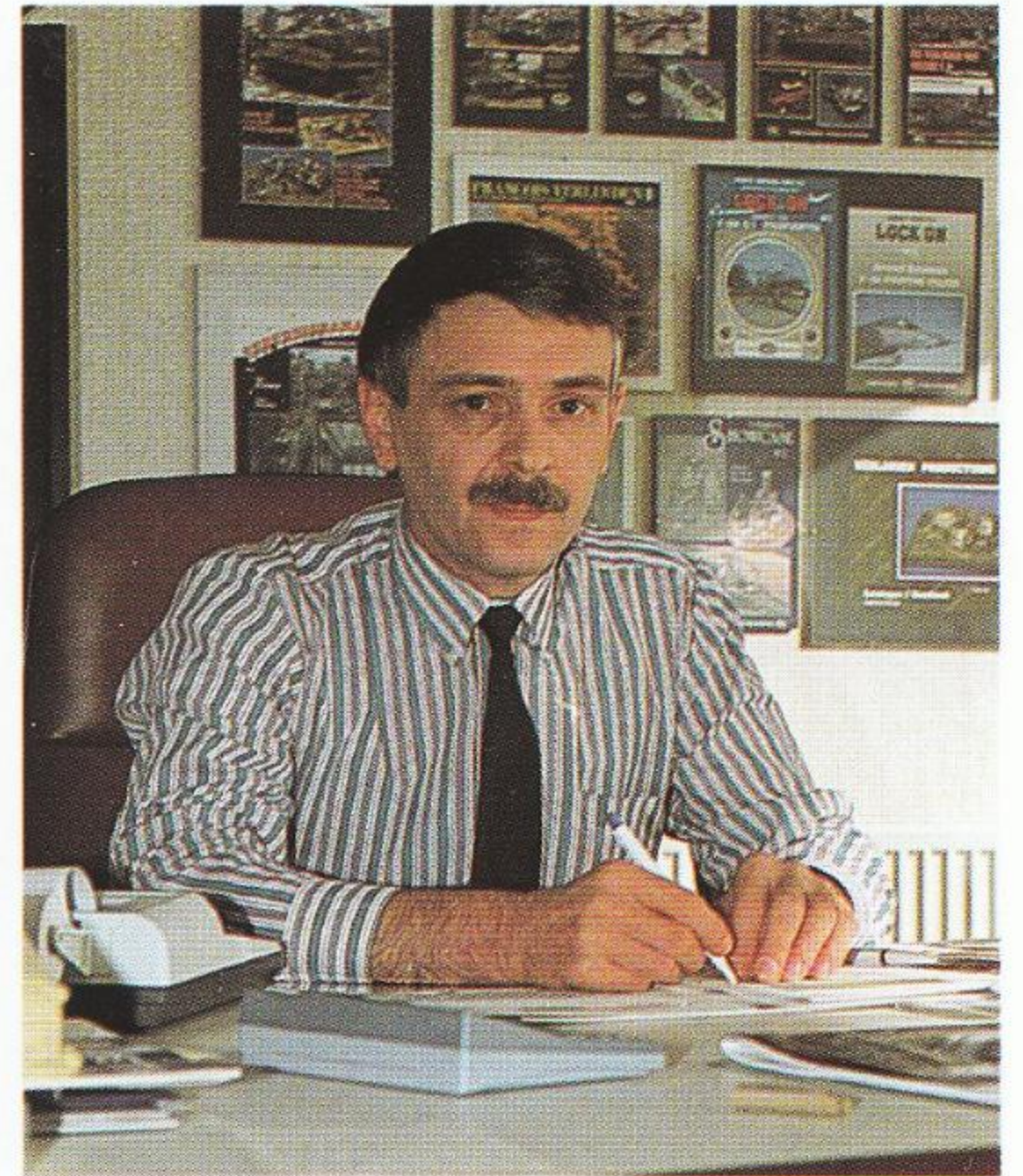
# Editorial

If someone were to ask the question, "What have modelers most frequently mentioned to you during the 25 years you have been in business" I would have to say, paint and color instructions. The same holds true with kit reviews in magazines. This has been a concern with model manufacturers for many years, but, no matter how much effort and money they put into it, they cannot deliver the perfect color instructions. Some of the larger manufacturers have even marketed their own brand of hobby paint, not so much to increase revenues, but to try to establish a standard which they can refer to in their instruction sheets. The modeling market is so tiny that manufacturers must sell their products in every country in the world to achieve sufficient sales to recoup their investment. The first problem arises with the fact that every major market is dominated by a different brand of paint and usually, the other brands are either not available or, at best, not readily available. The manufacturers have also tried to use main codes from a manufacturer in their instruction sheets. The problem with both these systems is that the paint to which they refer is only available in selected markets. The modelers in those markets are happy but all the others are confused. In addition, if the manufacturer gives you the code for a company that makes enamels and they are available, suppose you only like to work with acrylics, and vice versa. Other manufacturers have tried giving base colors red, blue, green, etc. What red? Light, dark, medium, which tint? Modelers use every brand of enamels, acrylics, lacquers, artists oils, I even know a modeler who uses household wall paint. (You would be surprised, it looks good!). They become comfortable with the texture, drying time, the way it lays on the model, and many other properties unique to that particular paint.

As a young modeler, I had the same problems for several years. I then gave up, stayed with the brands I was comfortable with, and disregarded the kit color instructions. I then began to rely on box art, books, magazines, photographs and the work of other modelers. After a time I developed the ability to "read" colors through improvisation and experimentation. I learned that there is no such thing as the "right" colors straight from a bottle. The influence of light, scale effect, weathering, shadows and personal preference are all important factors to deal with. The only way for a serious modeler to handle the paint dilemma is practice, practice and more practice. You cannot hope to master paint "reading" by painting one figure a year.

Our policy at VP is to show a clear color photo on the box, give you other examples from well known modelers, readers' models, and photos of the real thing, all in color in our magazine and books, which also include different techniques of painting and weathering using enamels, acrylics and oils. After you have studied the shading, weathering and tones of these examples and other references, experiment until you can approximate them, then using your preferences, develop your own individual style. This is the fastest way to learn. You cannot expect miracles in the beginning, but as time goes on, it will all fall into place.

François VERLINDEN



## Worldwide

Europe 1000,- Belgian francs  
Outside Europe/Airmail 1200,- Belgian francs

I make my payment by International Postal Money order (Belgian Francs only)  
(only the above method of payment is accepted).

I want to start my subscription with

Volume  Number

English  German  \* French  \*\* Italian  \*\*

\* Available as of Volume 2 - Number 1

\*\* Available as of Volume 2 - Number 3

Name \_\_\_\_\_

Street and n° \_\_\_\_\_

City and postal code \_\_\_\_\_

Country \_\_\_\_\_

## VERLINDEN PRODUCTIONS

Ondernemersstraat 4,  
KMO-Zone Mallekot  
B2500 Lier/Belgium.

## For North and South America

U.S. - 3rd Class - \$ 23.95 U.S./1st Class - \$ 30.95  
Canada/Mexico Air - \$ 33.95 / Surface - \$ 30.95  
Foreign Air - \$43.95 / Surface - \$ 33.95.

Subscription begins with current issue.

Back issues available direct by mail order (not by subscription).

Name \_\_\_\_\_

Address \_\_\_\_\_

City, State, Zip \_\_\_\_\_

Country \_\_\_\_\_

Write or if paying by credit card call (314) 281-5700 M-F 8AM

to 5PM C.S.T. for your subscription.

Checks must be U.S. funds drawn on U.S. banks.

Credit Card Information \_\_\_\_\_

Cardholder Name \_\_\_\_\_

Signature \_\_\_\_\_

Card Number \_\_\_\_\_

Expiration Date \_\_\_\_\_

## VLS

811 Lone Star Drive  
Lone Star Industrial Park  
O'Fallon, MO 63366  
USA. - Tel. (314) 281-5700 - Fax (314) 281-5750.





# The Last Waltz

A diorama by  
Andreas NORMANN,  
Germany

Edited by



## HISTORICAL BACKGROUND

In early 1944 the Nazis realized that they were going to lose their Hungarian allies. They knew they could not leave a large, undefended area between the German border and the Soviet armies that were quickly advancing toward the Reich.

The Germans no longer had any confidence in their Hungarian friends and they quickly occupied Hungary during Operation Margareth I.

The "Schwere Panzerabteilung 503" had been completely disorganized, and had lost most of its tanks and material, but was regrouped and resupplied with armor, many of the tanks being the new King Tiger, and was sent to Hungary to plug the gap. The ensuing battles in which they fought against much stronger Soviet forces were some of the most fierce of WWII.







#### THE MODELS

The King Tiger was chosen as the focal point for this diorama. Tamiya's latest version of the King Tiger with Porsche turret was the kit used. The instruction sheet of this kit shows a winter camouflage version bearing the name "Anneliese" on the gun barrel. Although no unit indication is given in the instructions, research disclosed two photographs which clearly showed this vehicle belonged to Panzerabteilung 503, in the Budapest area - perfectly fitting the time and place for this diorama.

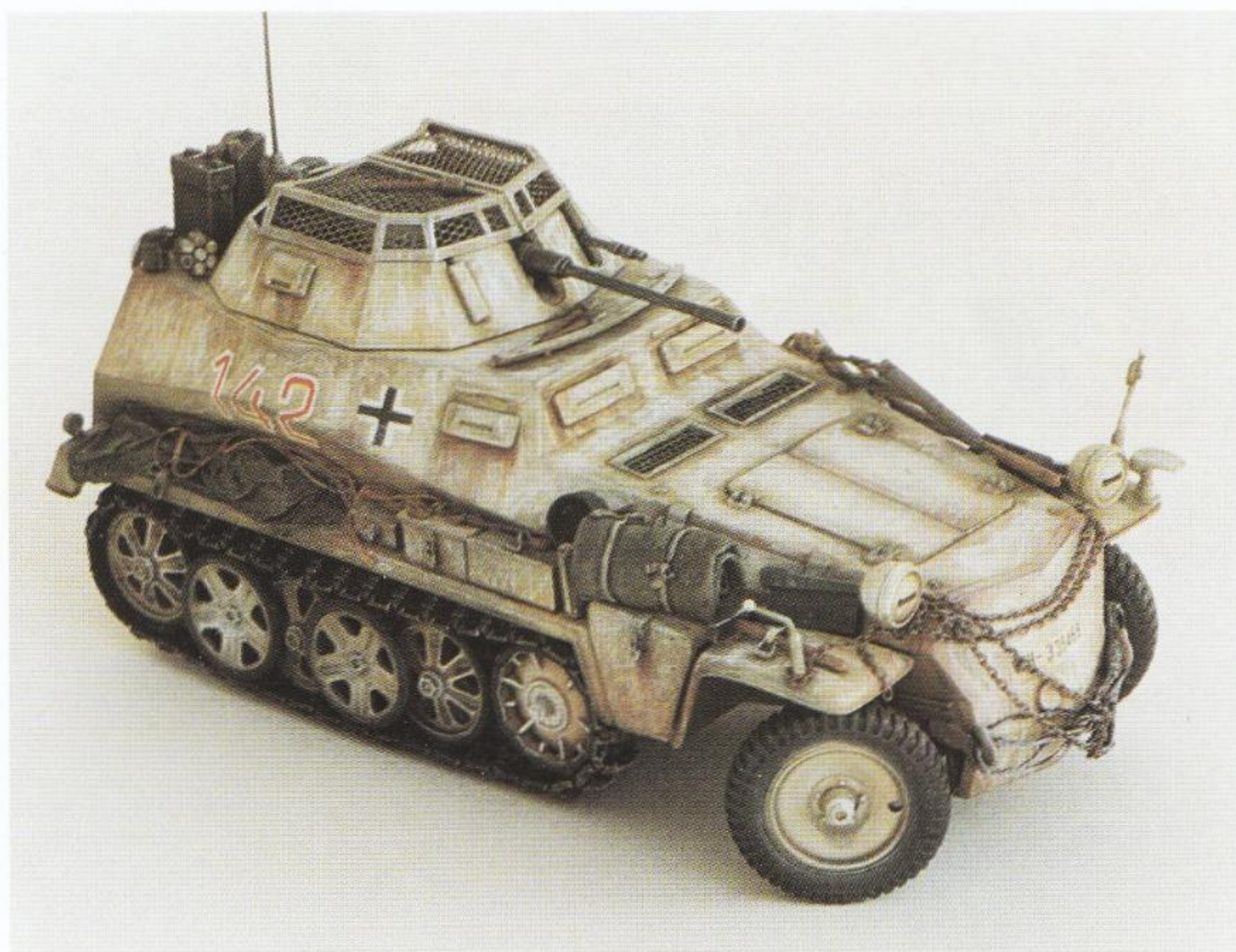
The Tamiya model is an excellent example of modern plastic kit engineering and doesn't require much extra detailing. Zimmerit was added with putty, and mudguards were heavily damaged by thinning them with a motor tool from behind. VP mesh wire was used to represent the engine intake covers. The suspension arms were kept movable to show the vehicle on uneven terrain. The model was next attached to a piece of shaped marine styrofoam that could be incorporated into the large scene later.

Painting white wash camouflage is not as simple as it looks. It is best to follow the procedure as on the real thing.

Start with the sand-green-brown camo as base coat, then a more or less transparent white wash. If needed, this wash can be applied two or three times in such a way that the three tone scheme shines ever so slightly through the white. After drying, several drybrush coats of off white and straight white were applied. To finish, white pastel can help too. Rust spots and streaks were added with pastels.

#### SDKFZ 250/9

The SDKFZ 250/9 halftrack is also from Tamiya, built straight from the box without major changes. Fine tuning this kit only involved a finer mesh wire on the turret cover and Modellkasten tracks, replacing the poorly detailed rubber bands. Painting and weathering followed the same techniques as for the Tiger. Another common practice by the German army for winter camouflage was scribing





irregular lines with a piece of chalk. This was also done to the model with a white paint pen. Additional gear like blankets, ammo boxes, tools, tow cables, ropes and chain from the VP line was added as one would do with all operational military vehicles.

#### KUBELWAGEN

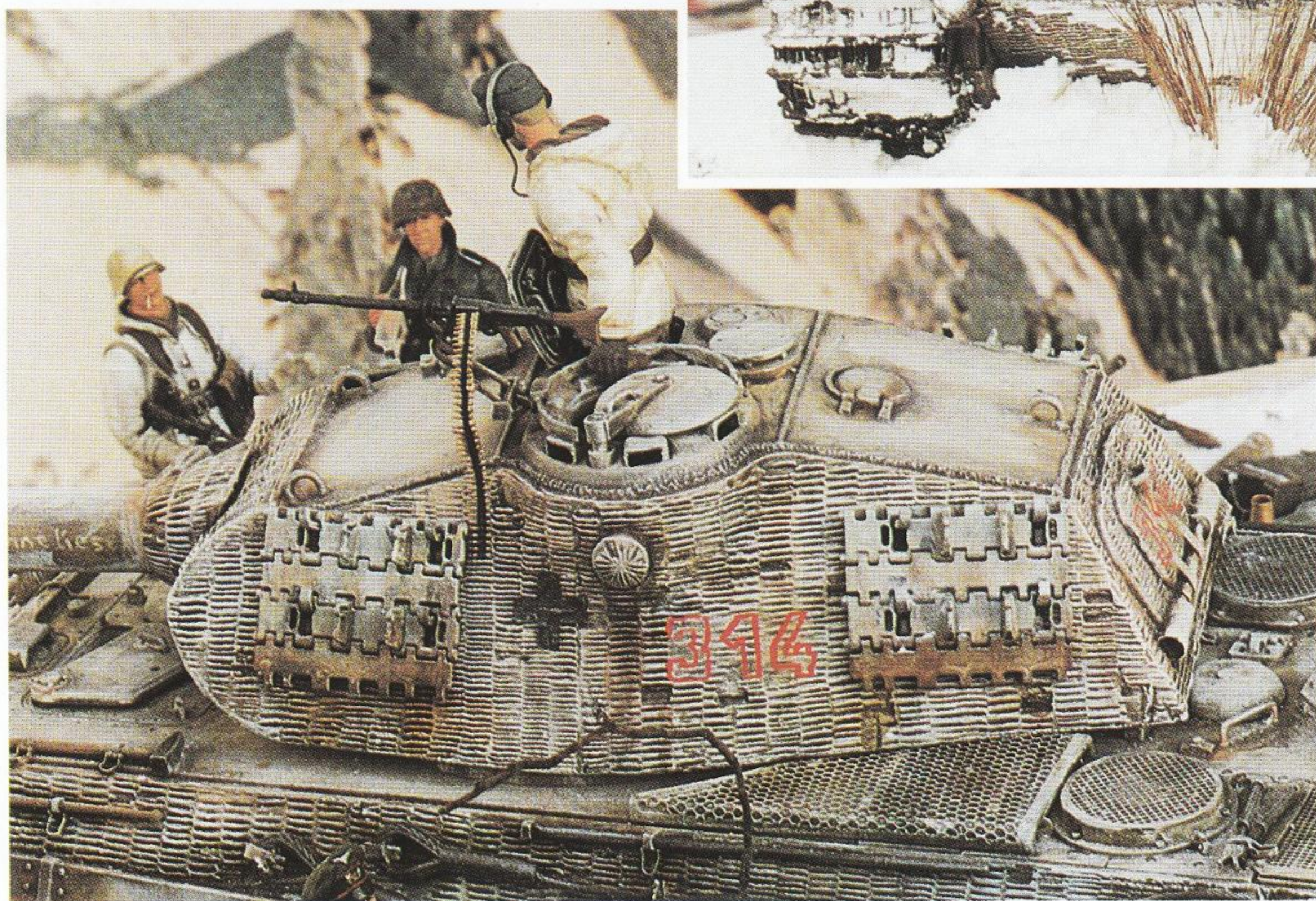
The old Tamiya and Italeri Kubelwagen kits were great for their day, and still are high quality kits. But now that the Hasegawa kit, which was released a couple of years ago, is available, it was the obvious choice. Certainly pricey, but undoubtedly the best with its full suspension and engine detail. Winter camouflage for the Kubelwagen was only the white paint pen over the weathered sand color.

#### PHANOMEN-GRANIT TRUCK

This is an "after market" resin kit from SMA, by far the most expensive kit used in the diorama. If one compares price with quality of this kit, it is far too expensive. Nevertheless it serves its purpose and is a change from the ever present Italeri Opel Blitz, the only 1/35 WWII German truck plastic kit on the market. Painting and weathering was accomplished with a mixture of techniques used on the other vehicles.

#### THE DIORAMA

The theme of the diorama is based on a segment of a Stalingrad movie. When VP recently released a set of pianos, the scene from the movie came to mind, being German and Russian soldiers who came together in a town square to play the piano and sing together for a moment. The war and their misery was forgotten for a few seconds. Somewhat later, they began killing each other



again. In this diorama, German soldiers discover a piano among the debris of a ruined building in the Budapest area and use a quiet moment between the fighting to celebrate New Year's Day, 1945.

Ironically, the Tiger tank is being rearmed for the next battle. A high ranking officer is watching his men and allows them a few minutes despite the fact that time is running out, because he knows the coming battle is hopeless and this will probably be their "Last Waltz". A few weeks later, the battle for Budapest was lost.











# "Friend or Foe ?"

## France, 1940 & 1944



a diorama by  
Dieter METZDORF,  
Germany

Edited by



Did it ever happen to you? You just finished a diorama which involved extensive construction and painting, when suddenly you realize you could have used different vehicles and figures to tell a whole new story in the same setting. For years, this idea kept crossing my mind so I finally decided to add a next stage to my "France 1940" diorama. This time, however, it would not focus on the German Blitzkrieg invasion of 1940, but it would tell the story of the liberation by Allied troops.

An important factor with every diorama is the story it tells. Here is France, July 1944. A German reconnaissance and communications group of a "Fallshirmjägerereinheit" or paratroop unit finds shelter inside a demolished rural house. Their vehicle, a SdKfz 4 "Stoeber", is hidden in the shed beside the house. From the remains of the first floor a paratrooper is reporting the present situation to the commander of the SdKfz 123 "Luchs" in the foreground. History books reveal the Luchs was used in both East and West theaters of war, so we can be sure about the correctness of its application in this scene.

Further down the road a Panzer IV Ausf. H, heavily camouflaged to confuse low flying aircraft, has halted to give the crew the opportunity to scan the sky for these deadly "hornets".

At far left a motorcyclist is trying to find his way on the map because the French resistance people smudged the roadsign. They even signed their "artwork" with the Cross of Lorraine, their trademark towards the end of the war.

Almost all soldiers look into the sky which is full of humming sounds, but it still is not clear if it's friend or foe that is closing in on them. Now we've explained the meaning of the title given to this diorama.

**Fig.1 & 2 Comparison between the initial scene, situated in 1940 (top diorama) and the second some four years later (bottom). A lot has happened since which shows in the total destruction of the house. A sort of "before" and "after".**

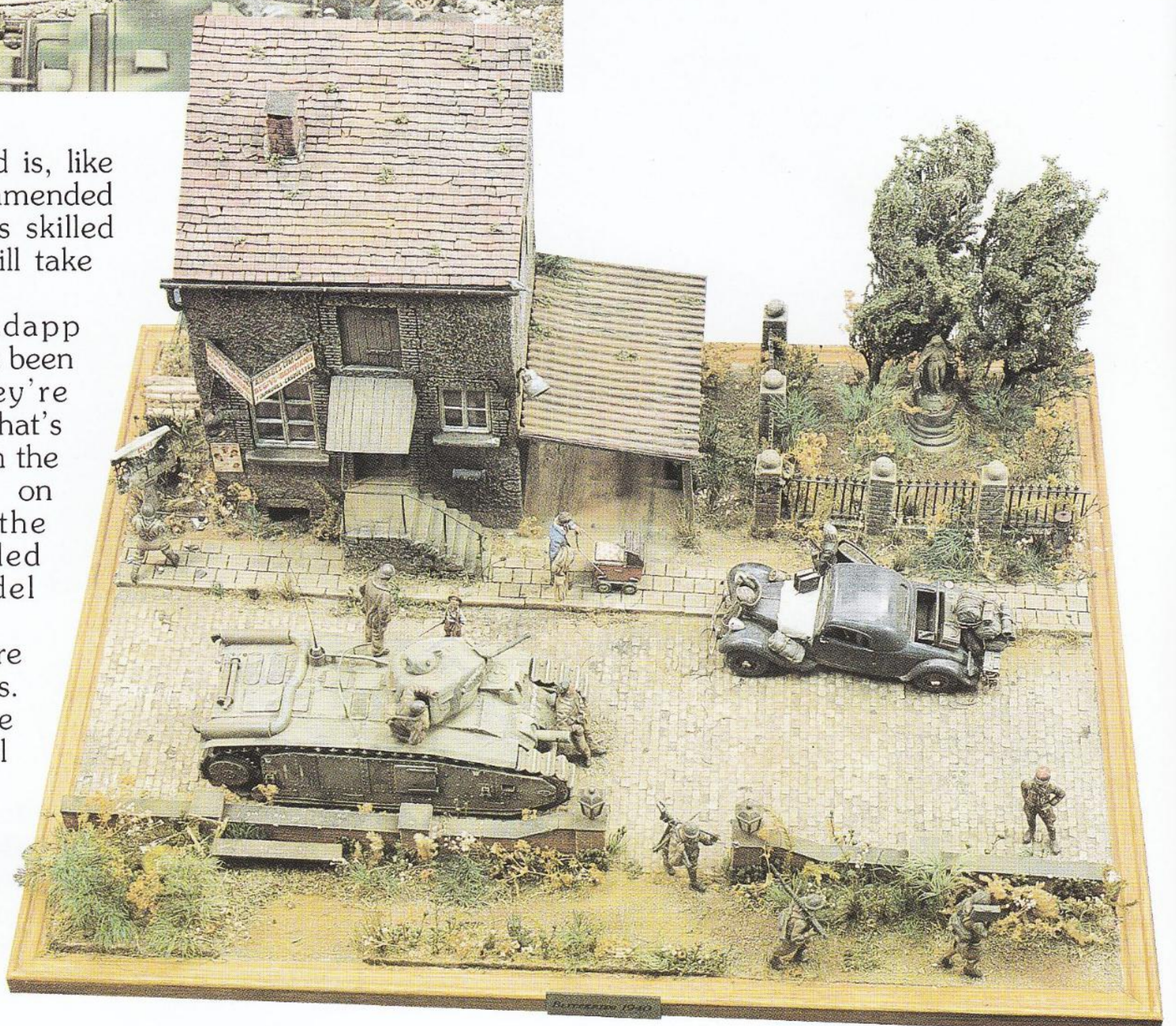




### THE MODELS

The "Luchs" is from VERLINDEN and is, like the "Stoever" from SMA, only recommended for advanced modelers. Not that less skilled modelers will fail to finish it, but it will take them a lot longer and at a greater cost. The Panzer IV/H and the Zundapp motorcycle are both Italeri kits and have been around for quite some time. They're relatively cheap and fairly accurate. That's why they were built almost straight from the box. The only thing that was changed on the tank was the replacement of the spartan tracks by the more detailed injection molded lincks from Model Kasten, a Japanese manufacturer. To enhance realism the sideskirts were sanded down to an acceptable thickness. Some cabling was added to the motorcycle and the oversized wheel

**Fig.3 & 4 Little remains from the quasi-peaceful setting of the early days illustrated at right. Air raid bombings and artillery shelling have taken their toll.**



spokes were discarded in favor of etched ones, unfortunately no longer available.

The house ruin was completed using different parts from different sources, all fitted together with some putty and some patience.

### THE FIGURES

Today's model market is overwhelmed by good 1/35th scale figures from various manufacturers. It's really up to you to look for the best or to combine the best parts of many to "construct" your own which suit your story. You know what they say: good modelers would make good surgeons.

A closer look to the MG-team in the foreground, the motorcyclist and the crew of the "Luchs" reveals their Verlinden origin.

### THE DIORAMA

Not much can be added to the way the diorama itself came to life as the same techniques were employed as described in all my previous dioramas in this magazine.

One thing, though. For years, I have been using (and please don't laugh now) spices instead of the railway scenery material. My favorites are pizza-, steak- and saladspices. It's easy to apply with some diluted white glue and the colors do not fade or discolor, even after a long period of time.

Come to think of it, if I used British, Canadians or American troops I could ...





ITEMS USED FOR THIS DIORAMA

Verlinden Productions

N° 13 Staff Maps, Road Maps

N° 18 German Military/French  
Civilian Road Signs Normandy

N° 20 German Road Signs / Russia

N° 23 French Commercial Signs

N° 31 Floor Tile Section

N° 52 Bannisters, Ornaments N°1

N° 82 Tank Crew Gear

N° 91 Artillery & Tank Ammo Boxes

N°136 German Panzer Crew

N°163 German Markings Black/White

N°164 German Markings Red/White

N°249 German Radio Set WWII

N°277 Wall Paper

N°355 SS Tank Officer

N°382 German Uniform Insignia WWII

N°569 German Tool & Ammo Boxes

N°577 75mm German Pak Ammo

N°619 Tow Chain / Small

N°637 German Infantry Equipment  
WWII

N°645 German Despatch Raiders WWII

N°680 SdKfz 123 Luchs

N°687 German Machine Gunners WWII

N°690 German Infantry / Walking

N°712 Tree Set / Small

Trophy Models

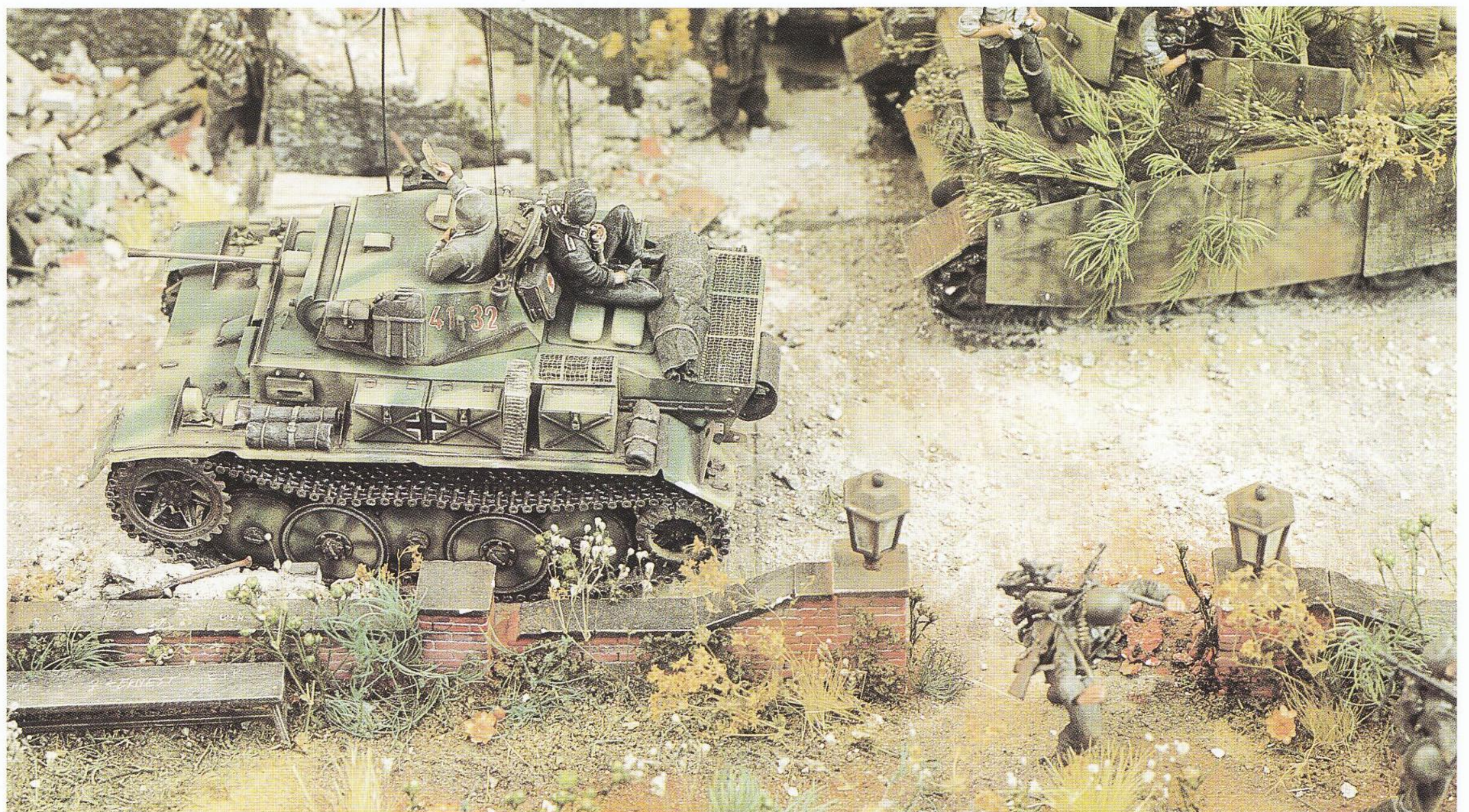
N°20019 Rooftiles

N°20022 Cobblestones

Italeri

Pz.IV Ausf.H

BMW & Zundapp Motorcycles







# "ACTION!"

## 1:35 Movie set

Edited by



By Arturo FLORES  
Photos by Santiago CALGAGNO

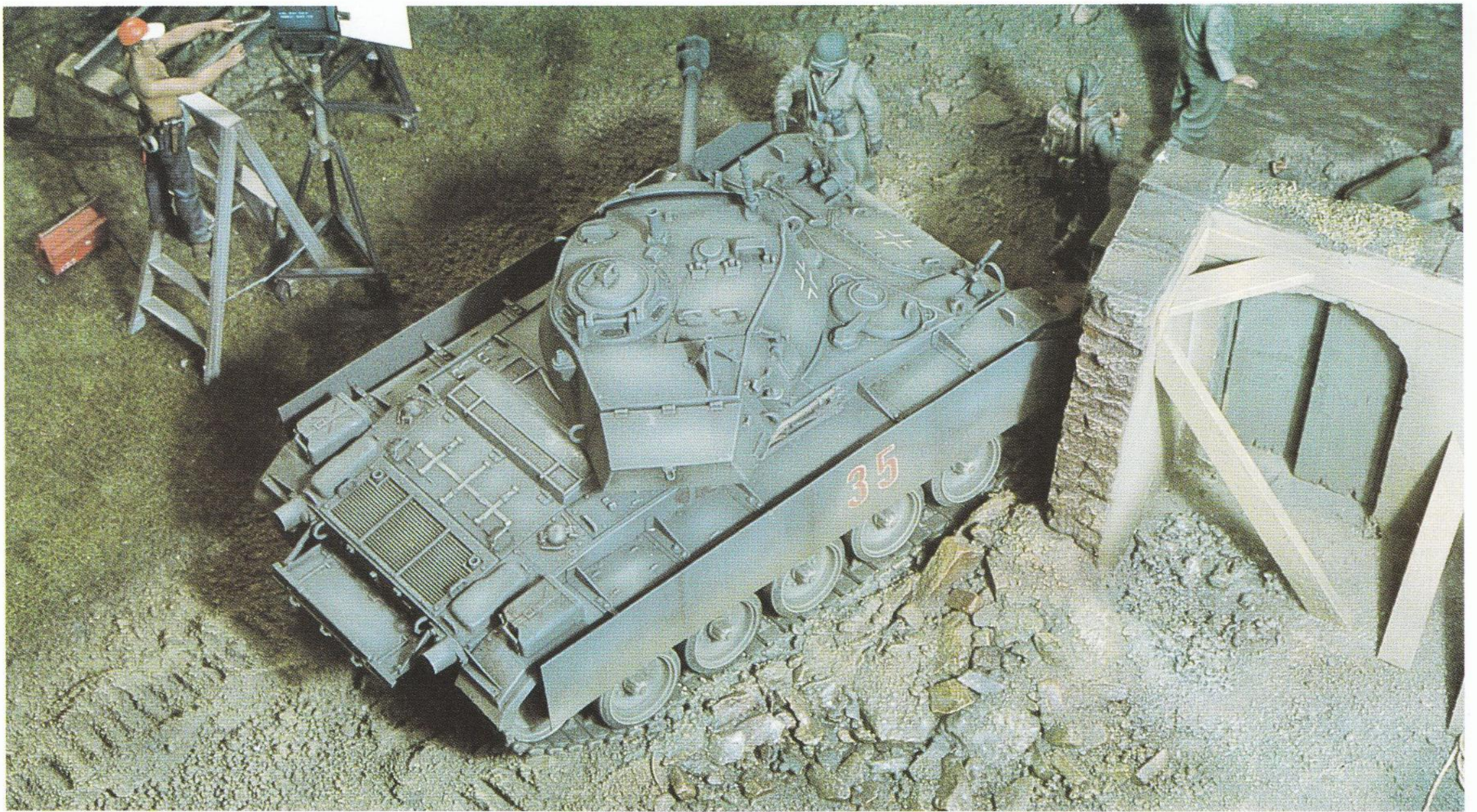
Since I began building dioramas quite a few years ago, the idea of making a motion picture set crossed my mind several times. Just imagine a diorama combining two totally different eras and atmospheres with a "behind the cameras" perspective, and you have a very stunning and unusual subject that is a lot of fun.

In order to start the project, I needed plenty of documentation and, fortunately, a friend of mine who works for Panavision in Hollywood solved my problem. He furnished me with photos and diagrams of the cameras and equipment used on a movie set. The most difficult task was scrachtbuilding the camera (a Panavision camera, of course).

I started with a video camera from the VP News Team as the body. I then added parts from brass tubing, sheet styrene, and some leftover photoetched parts from the scrapbox. The mounting bracket was taken from the Tamiya SdKfz 222 gun mount and the platform from sheet styrene and aluminum tubing. The lamps, ventilator and other equipment were made in the same way. For the electric power generator, I used the engine from VP's Hanomag Update Set, detailed from scrapbox parts. The next step was to detail all the figures to the desired poses. The following VP items were used;  
No.604 WWII G.I.'s,  
No.244 German Dinghy Team,  
No.610 German Casualty,  
No.687 German Machine Gunners,  
No.688 TV News Team,  
No.759 Academy Figures,  
No.292 German Civilians, and  
No.142, 143 and 144 Mechanics. I also used the girl from Andreas 'Lily of the Lamplight'.







Something all military enthusiasts are aware of is the rarity of seeing an authentic German vehicle, especially a tank, in a Hollywood production. With this in mind, the obvious choice for a German tank was a Chaffee.

By adding a muzzle brake, "Schutzen" (Skirts) and Panzer gray paint with German crosses, we have a "genuine" Hollywood Panzer.

The addition of an AMT Ford 150 pickup lends contrast between the modern and the historical.

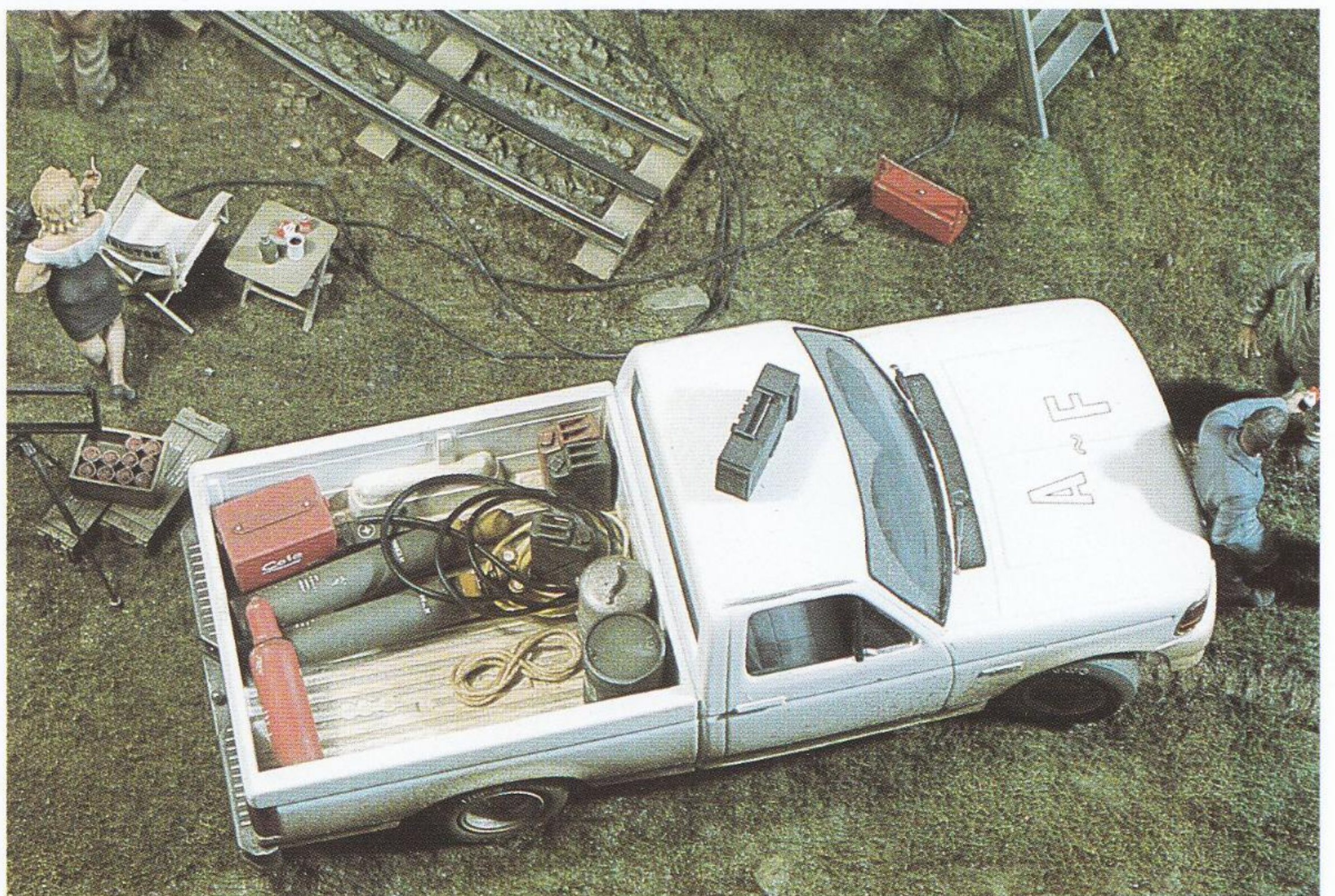
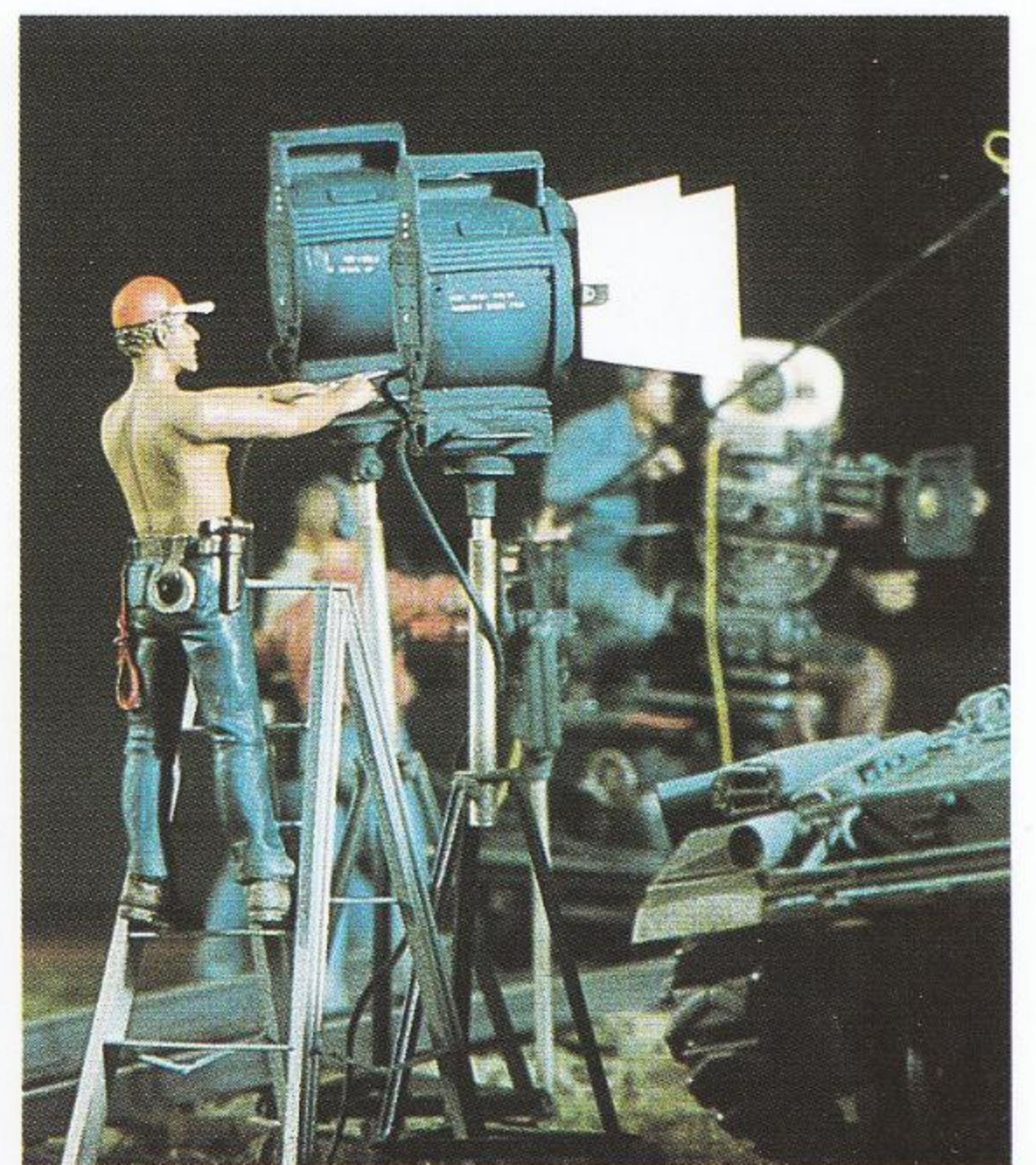
VP's Normandy Ruin became the focal point of the movie set and was detailed with Trophy Roof Tiles and balsa, not to simulate the real thing, but to depict a typical facade used in making films. After completing the components, I started on the groundwork.

The plywood base was covered with homemade paper mache' sprinkled with sand, pebbles and finally, static grass. All were pressed into the "terrain".

For the base I used Humbrol paint, artists oil wash, and drybrushed with enamels.

The figures were base coated with Humbrol and blended with oils. The vehicles were finished using the same method as the terrain.

For me, the most important part of a diorama is the idea. I always try to use my imagination and come up with something original, something that has not been done before. It's not always easy, but the satisfaction is well worth the effort.





# A DAY IN INFAMY PEARL HARBOR

Edited by



a 1:72 Scale Superdiorama

a diorama by  
Lewis PRUNEAU,  
USA

It had been many years since I first saw the famous photograph of the Battleship USS Pennsylvania, the Destroyers USS Cassin and USS Downes in drydock that was taken after the Japanese attack on Pearl Harbor.

It was a very striking photo which I never forgot and many times throughout my modeling career I considered it as a subject but always rejected it because of the size. I felt that anything less than 1/72nd scale could not do it justice, and in that scale it would be about 12 feet, (3.65 meters) by 3 1/2 feet, (1.1 meter). Then one day, I decided to stop considering it and just do it.





### THE BASE

The drydock itself was made of marine styrofoam set into a wooden frame. This was necessary because of the size, anything else would have been too heavy. The building is a model railroad building modified to depict the one in the photo. The walking crane was built from scratch.

The water was airbrushed onto high grade plywood, then after drying, some vegetable oil was applied along with Raw Umber artists oils to simulate the oil slick.

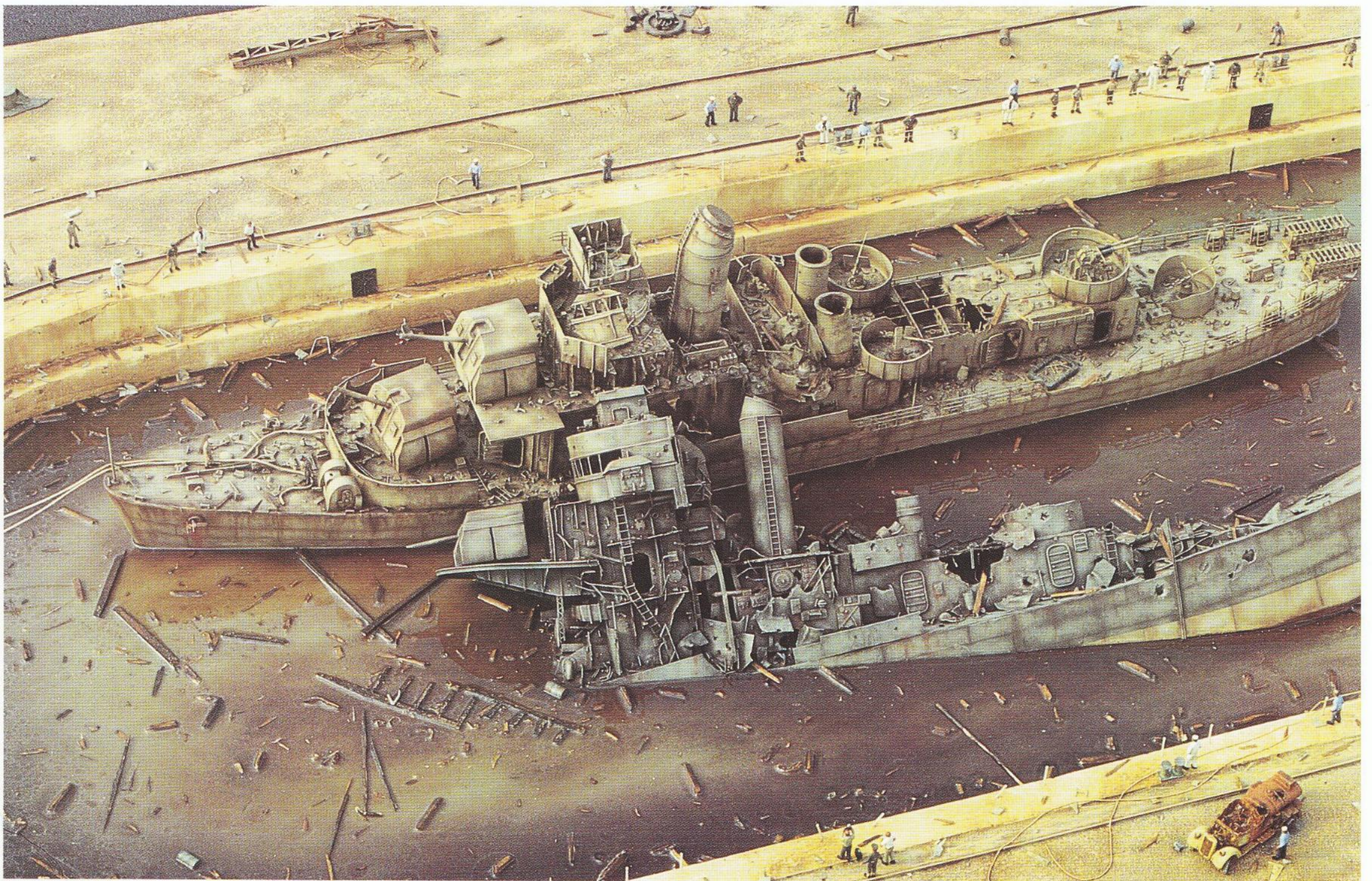
The debris from bass wood was stained and strewn about and then the entire area was coated with clear polyurethane.

### THE VEHICLES

All the vehicles were Hasegawa, mostly straight from the box, but the fuel truck was "burned" with a Dremel tool and then given a coat of Burnt Sienna "rust". The forklift was from scratch. The Kingfisher floatplane was from the old Airfix kit.

### THE FIGURES

All 250 figures came from about a dozen 1/72nd kit figures, which I posed, reposed and so on, simultaneously casting and recasting until I had two hundred fifty unique figures. They were quite a job! All were painted with artist's oils and Humbrol enamels.



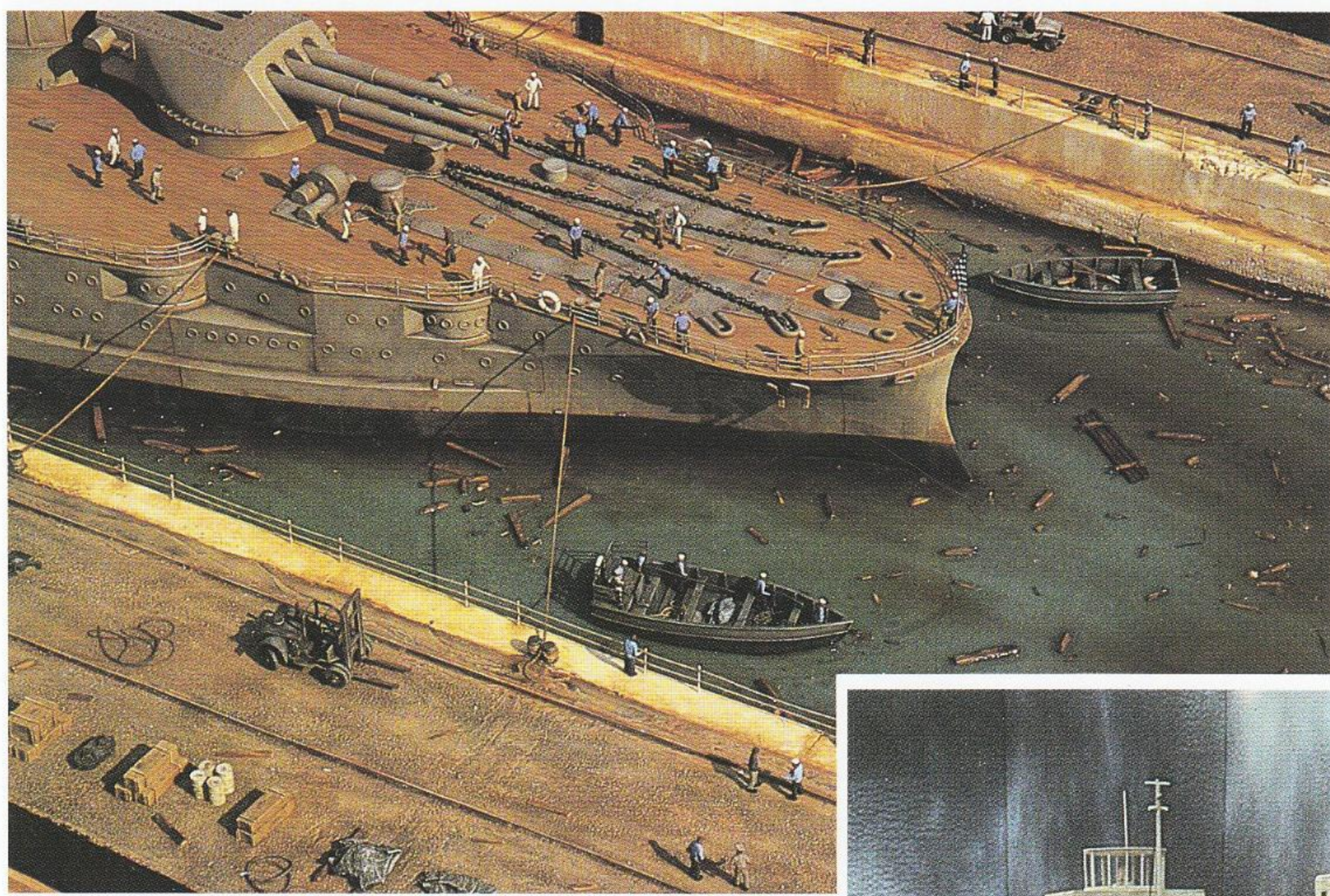
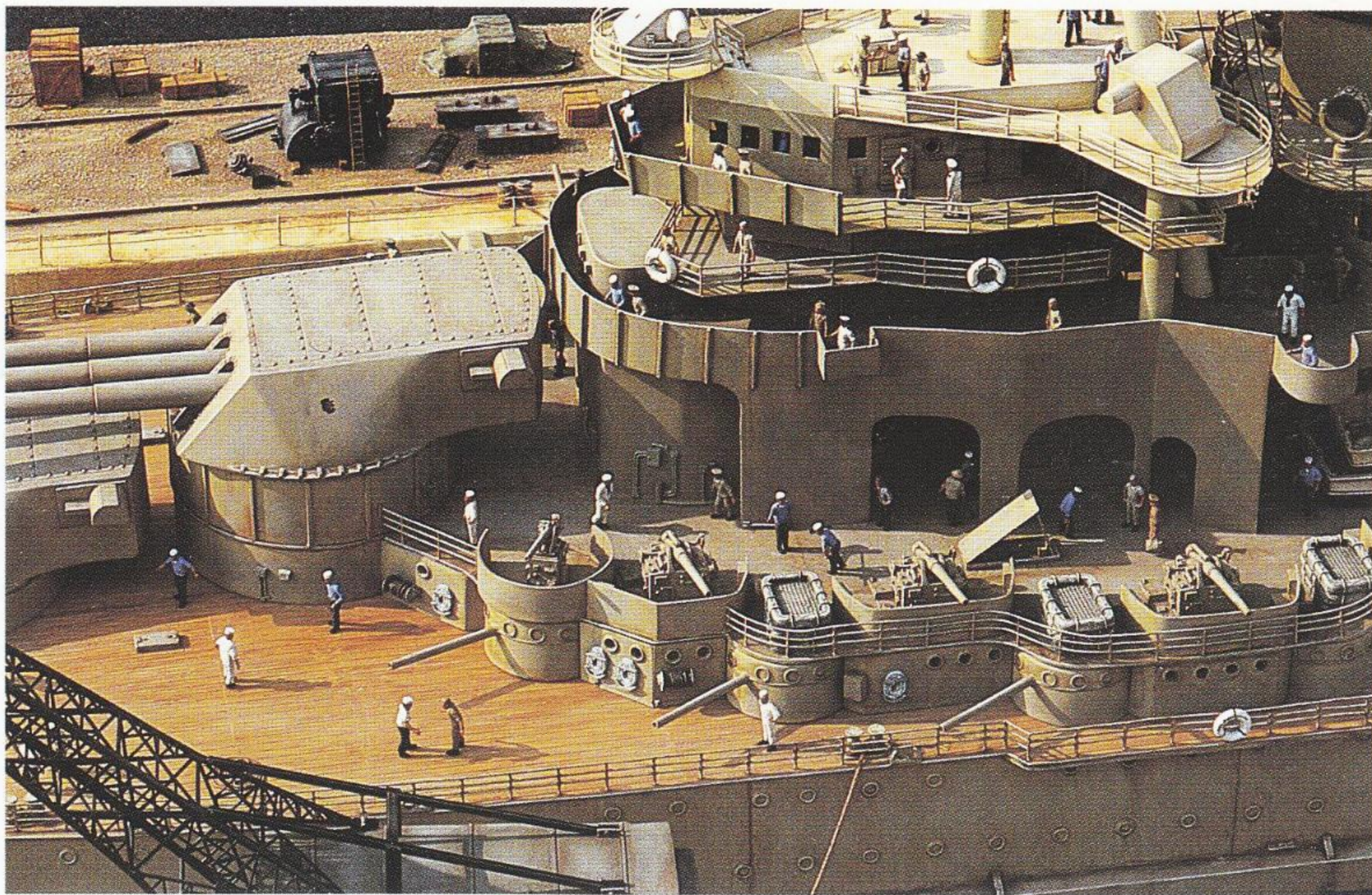


## THE SHIPS

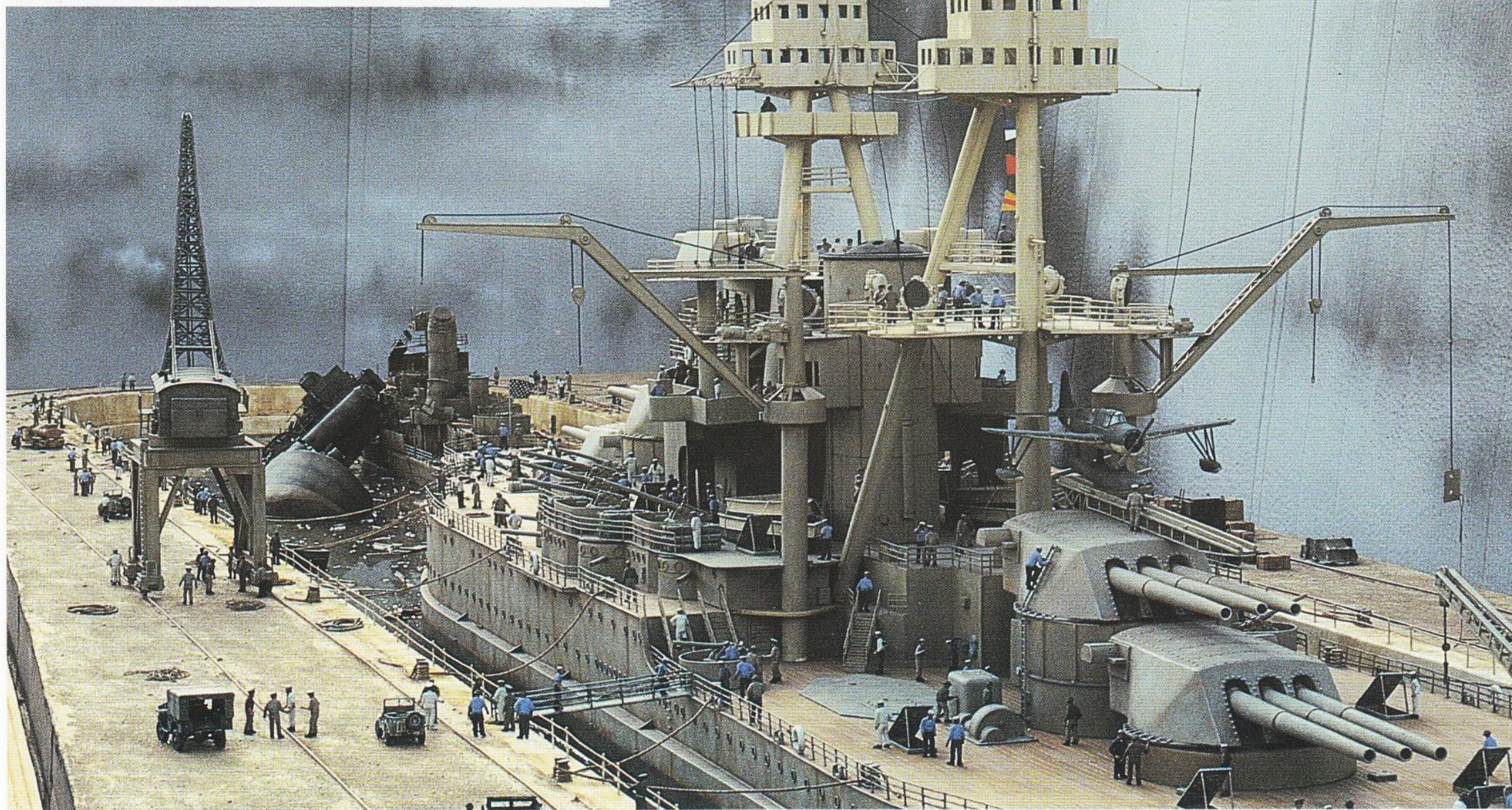
The Pennsylvania was barely touched at Pearl Harbor, and I built it from various gauges of plastic sheet. The hull began as bulkheads and after being sure of the dimensions and shape, I skinned it with thin gauge styrene sheet.

The entire superstructure was also from sheet, except the main turrets and guns. For each type I made a master from sheet and turned plastic and then cast the needed quantities from resin. Even the rails were cast from a scratched master in resin.

The Cassin and Downes were scaled from blueprints and I built them damaged as I went as opposed to damaging them after they were built. The base coats for the Pennsylvania were Pactra Rebel Gray, the Cassin, Testors Euro Gray and the Downes,



Rebel Gray with some Matt Black. The entire diorama was washed with Raw Umber and drybrushed to bring out the highlights.









# IN THE FIELD

Edited by



## ARMY RIVER CROSSING

by  
Walter BÖHM, Germany

After the troop reductions in Europe, there is only one active Ribbon-Bridge company for the corps-troops of V. US Corps in Germany. The 502nd RIBBON BRIDGE Co. is a part of the 130th Engineer Brigade.



An aluminum ramp of RIBBON-BRIDGE slides into the water and automatically unfolds by water buoyancy acting through tension cables and levers.



The boat slides from the rear of the truck into the water. The M945 truck has the new three color NATO camouflage and additional rack of field construction for the camouflage net.



**M945 (6x6) 5 ton with a Bridging Boat of the 502nd. Co., 565th Engineer Bn., during "RAFTING OPERATION" at Grafenwöhr swim site.**



**Assault bridge boats from 502nd. Engineer Co. drive into position and wait for the ramps and interior bays. The boats hold the floating bridge in place. The safety boat is used for security and first aid purposes.**







**M1A1 HA Abrams from 2 Bn., 68th Armor Rgt. leave a RIBBON-BRIDGE tank ferry. The Bridge can support 70 ton loads and 80 tons when conditions are ideal.**



**ACKNOWLEDGMENTS :**  
 Walther Böhm would like to offer special thanks to :  
 LTC Shields, Cpt. Drummond, Mr. Hofmann of 130 Engineer Brigade



**RIBBON-BRIDGE in use as a ferry raft with engineer vehicles as M9ACE, M113 A3 and Humvee of the 40. Combat engineer Battalion. The RIBBON-BRIDGE system was first fielded by the US ARMY in West-Germany and South Korea in 1976. The equipment of the 502. Engineer Co. consists of 30 interior bays and 12 ramps, sufficient for 212 meters of fixed bridge or six 70 ton rafts.**



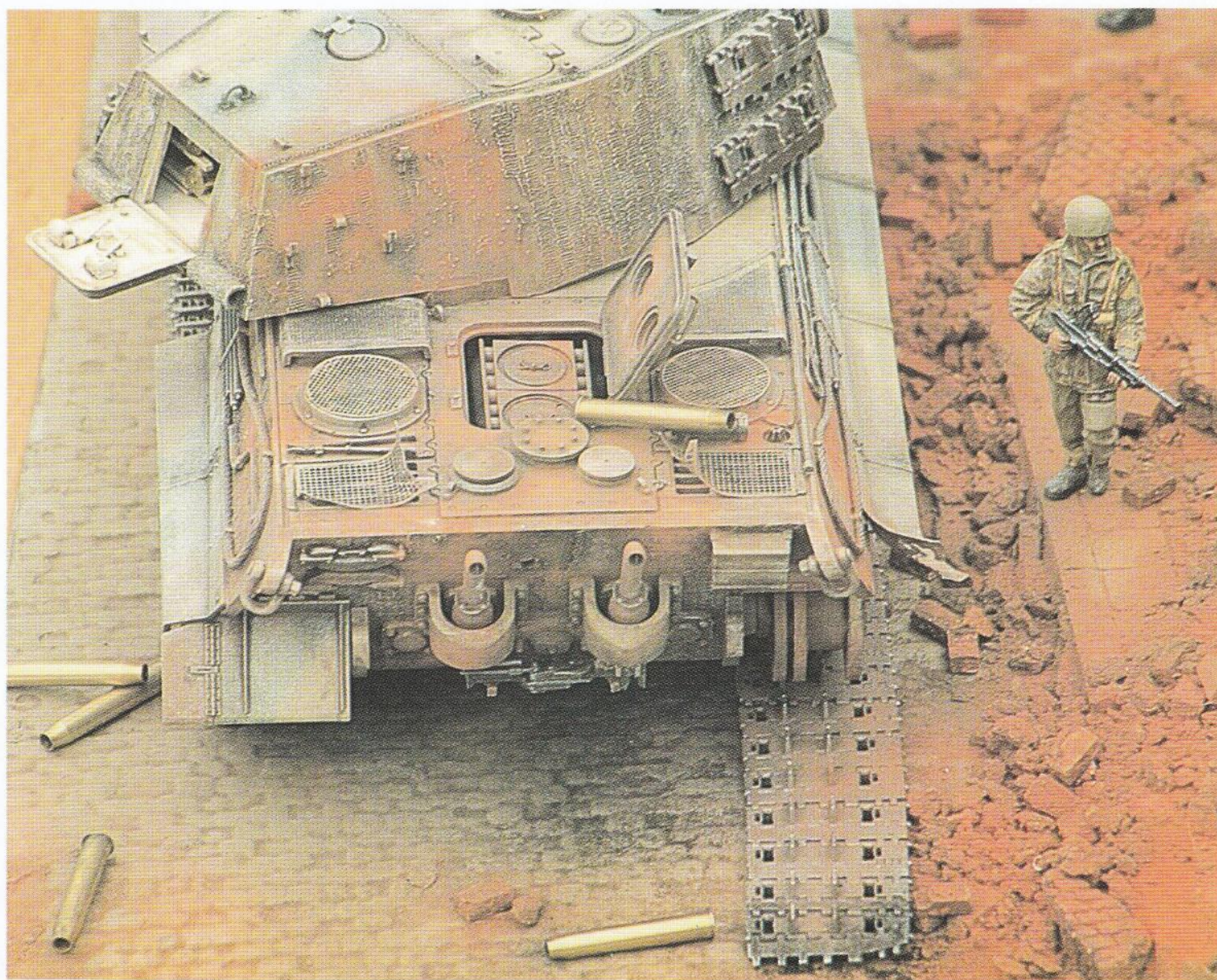
# Against All Odds: Arnhem 1944

A diorama by Ian RUSCOE

Edited by



The diorama shows a group of British paratroopers cautiously making their way past a knocked-out King Tiger in the small Dutch town of Arnhem, September 1944.







The King Tiger is a recent release from Tamiya. This was built using the accessory sets of shells, shell cases, individual track links and etched engine grill covers available from Tamiya. The only additional detailing undertaken was VP's Panther engine No. 405, (used to power the King Tiger), the weld marks and zimmerit made with the use of a pyrogravure. The battle damage to the rear hull was achieved by using a motortool fitted with a dental burr. The model was then sprayed and weathered using the wash, drybrush and pastel techniques.

Verlinden's Ruined Mansion, No. 108, was used and this received some additional detailing using parts from VP's accessory range. For the street I used Trophy's Cobblestone Sections with the small areas of pavement made from plastic sheet. The rubble is a combination of dyed cat litter and Trophy's Red Brick Set. Painting and weathering was executed using the techniques familiar to Verlinden Publications readers.

The figures came from three different manufacturers, Belgo, Hornet and Chota Sahib. The flesh tones were painted with artists oils while the uniforms were done with enamels, washed and drybrushed.





LIST OF ITEMS USED :

TROPHY

20022 Cobblestone Section  
20027 Red Bricks

VERLINDEN

031 Floor Tile Section  
050 Lead Foil  
108 Ruined Mansion

277 Wallpaper

307 Framed Paintings/Carpets

405 Panther Engine Maybach HP230 P30

883 Office Furniture 1930/40

TAMIYA

King Tiger w/Production Turret

Engine Grill Set

Individual track links - Shells/shell cases

HORNET Parachute Canisters

Paratrooper Kneeling

Paratrooper Kneeling,

Cocking Rifle

Paratrooper Running

BELGO Paratrooper Walking w/Bren

Paratrooper Walking w/Rifle

CHOTA SAHIB

Para carrying wounded R.A.M.C. Lt.





# HOT LZ VIETNAM: 1969

Edited by



A diorama by  
Mark ENGLER.



## THE STORY

The helicopter, more than any other weapon or vehicle, has come to symbolize the Vietnam War. The helicopter gave an entirely new perspective to modern day warfare. This aircraft could put men, supplies, even entire fire bases practically anywhere Command desired. This gave the Americans in Vietnam an advantage that had never been known before, by any army in the past.

The Huey in this diorama is a Bell Iroquois UH-1D "Slick", flown by men of the 1st Air Cav. (Air Mobile), reenacting a scene that was to happen thousands of times in the Nam.

## THE MODEL

The bell UH-1D Huey is a 1/32 scale kit by Revell. It was originally supposed to be a gun ship (Hog), but I converted it into a troop transport (Slick). First I built the interior and rotor. I found that Battle Line Miniatures made a 1/35 scale M-60 Flex Mount set. This included the door and seat support pole, M-60 mounts, M-60s, ammo boxes, and ammo feed







chutes. I assembled the floor, roof, and engine wall. Then I put the support pole in place and scratch built the passenger and door gunner seats around the engine wall. The seat frames are made of .035 inch brass rod and solder wire. The seats themselves are made of typing paper. The seat belts are solder wire flattened in a vise.

The curtain (separating the door gunners from the grunts) is tissue paper with flattened solder wire hangers. I had to rebuild the pilot and copilot seats into armored seats. I used the basic frame of the chair but made the armor plating out of .010 inch sheet styrene. Also added was the seat belt hook ups and seat springs made by wrapping small gauge wire around a piece of round stock.

It was at this point of assembly that I began posing the figures (helicopter crew). I built this model a couple of years ago when Vietnam era figures and gear were hard to find. Pilot figures were practically non-existent, so I had to build my own. I used the tanker helmets from Tamiya's U.S. Armored Personnel Set. I didn't like the faces in the helmets, so they were gouged out with a hand grinder.

I used new faces taken from Tamiya's U.S. Gun and Mortar Team Set.

Next, the tanker helmets were changed into pilot helmets by adding a visor retainer, mouth piece, and wire. The upper bodies of the chopper crew were made out of the commander's upper body from the APC kits. I made the flak jackets from thin cardboard. The large pocket in the middle of the chest area is characteristic of helicopter crew flak jackets and was made from paper and cardboard.

The pilot and copilot's lower bodies







and legs were both taken from the seated driver figures in the APC kits. Both door gunner's lower bodies and legs are also from the APC kits.

I made the copilot hold tightly onto the helicopter control stick by sawing and repositioning his arms. The pilot looks as if he is hitting a switch on the overhead console. I posed one of the door gunners "rocking n' rolling" with his M-60.

The other door gunner had the misfortune of being hit in the shoulder. Next I started working on the two main body sections of the Huey. First I removed the small doors behind the pilot and copilot doors with a hand grinder and a file. Some minor interior details were added to the inner walls of the Huey with .010 inch sheet styrene.

Once I had the interior and figures painted, I set them into the body of the Huey and glued both halves together. I had to do a lot of filing and sanding to make the chopper look like it was all one piece. I remade all the windows on the Huey out of Squadron clear Thermoform. I glued them in place with plexiglass cement.

I then added the outer details, handles, rear elevators, landing skids, and air scoops from the kit. I took the engine cover panels and filed out the engine view ports. I used model railroad metal screening glued from the inside to







cover the ports to make it look like the real thing. I replaced the windshield wipers with highly detailed cast metal model railroad wipers.

The antenna running alongside the tail of the Huey was made with sewing needles and thread. I used the eye part of the needles, mounted them in the proper location and passed the thread through them. Lastly the M-60 flex mounts were glued in place.

Since the interior and windows were already in place before I spray painted the exterior of the Huey, I had to make covers for the two huge sliding doors out of sheet styrene. They had to have a nice fit, so that over spray would not creep into the painted interior.

The windows were masked off with Micro Mask (a liquid masking material). Once everything was sealed off I sprayed the Huey. After I faded the paint a bit, I sprayed the entire model with gloss varnish.

Once this dried I added the decals. Some of the kit decals were used, and also some decals from Micro Scale's 1/32 U.S. Army decal sheet were used.

The skull and cross bones on the nose of the Huey is a 1/48 scale F-14 Tomcat decal by Micro Scale. The name "Body Count" was made with dry transfers from Woodland Scenics.

After all the decals were in place, I sprayed the entire model with clear flat. I then painted the small details, and weathered the Huey with pastels.

All grunt figures in this diorama are made by Battle Line. They were all built stock (minor details added) and pinned in place.

#### THE BASE

The base for this diorama is very plain and simple. I did this so the main attention would be focused on the Huey.

A piece of 1 x 20 x 20 inch particle board was used. I used a miter box and standard molding to make the frame. In order to suspend the Huey in midair, I used a piece of .072 inch threaded rod which was bolted into the bottom of the Huey during assembly. The other end of the rod was precision fit into a piece of steel 3/4 x 2 x 3 inch. I milled out a square pocket 3/4 inch deep in the base, so the steel block would be flush with the top surface.

The figures and Huey were pinned in place and then removed for painting purposes and the whole area was covered with Celluclay.

Next, all types of dried plants and moss were affixed with white glue. After drying, I pushed all the foliage down with my hand so it would appear as if the force of the rotor wind was flattening the plants below.

Finally the base was air brushed and everything was glued permanently into place.

#### LIST OF ITEMS USED:

- Revell
  - Bell Iroquois UH-1D (Huey)
- Tamiya
  - U.S. Armored Personnel
  - U.S. Gun and Mortar Team
  - U.S. Weapons Set
- Battle Line
  - M-60 Flex Mount Set
  - 6 Vietnam era figures
- Micro Scale
  - U.S. Army Helicopter decal set
  - F-14 Tomcat decal set
- Squadron
  - Clear Thermoform
- Model Technologies
  - Buckles and Gunsights
  - Woodland Scenics
  - Dry Transfers
- VP
  - U.S. Army Stencilling (no. 160)

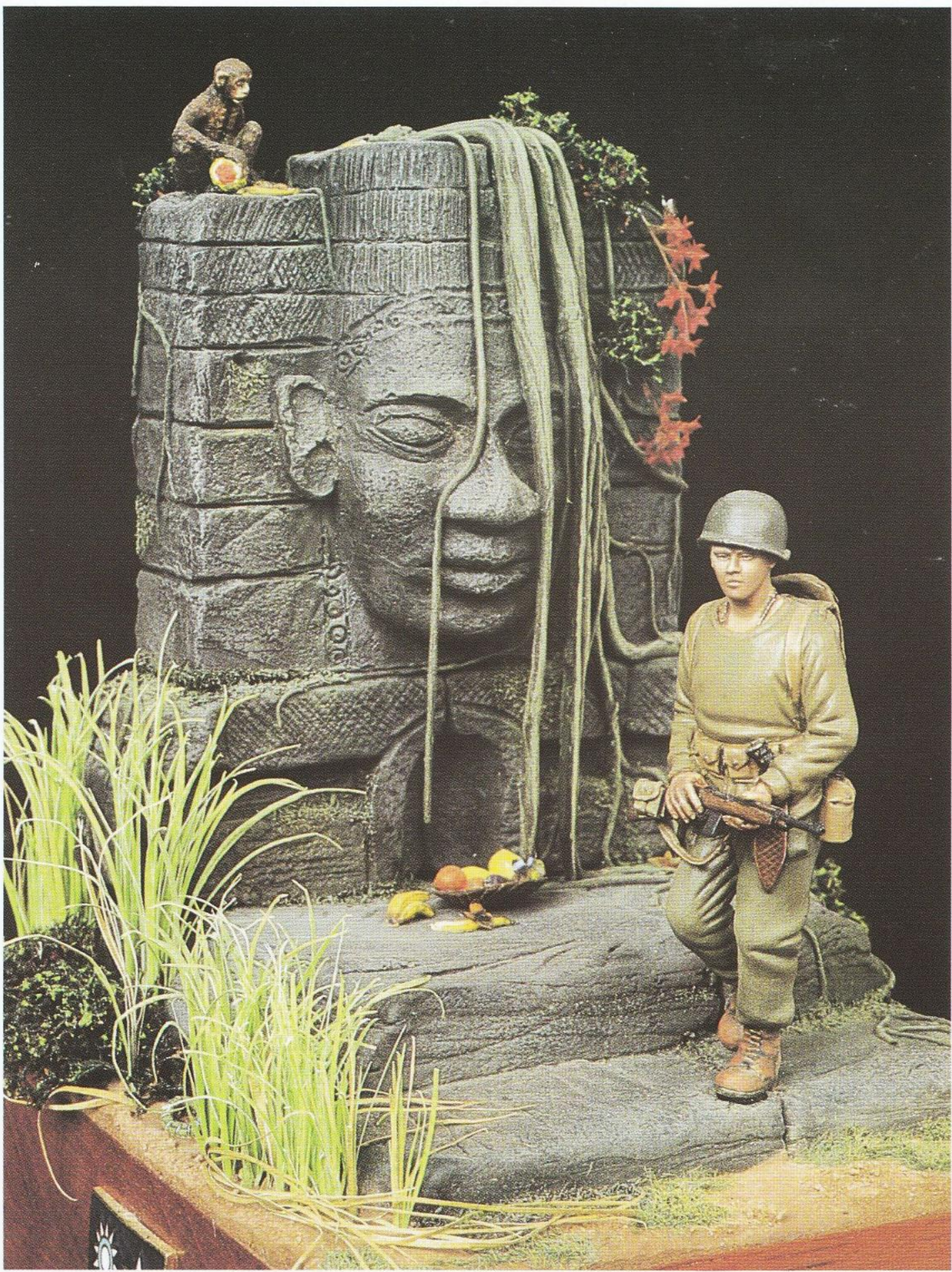


# FIGURE SHOWCASE



THE BEST MAN IN OUR ARMY - W.HORAN U.S.A. 54mm SCRATCH





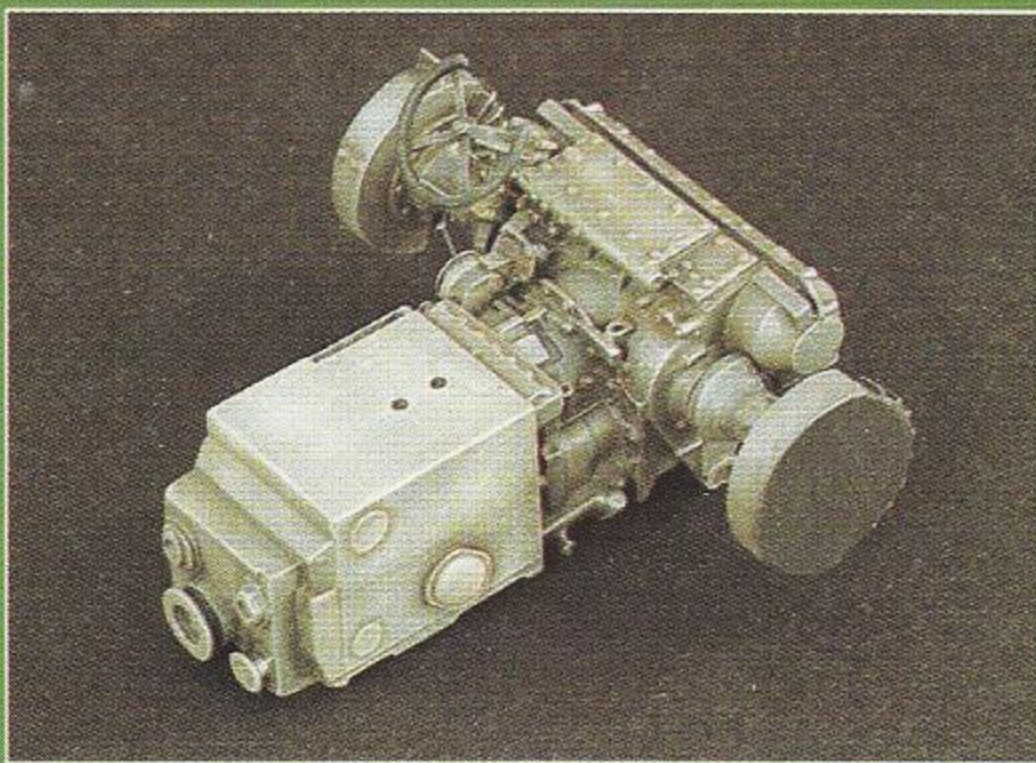
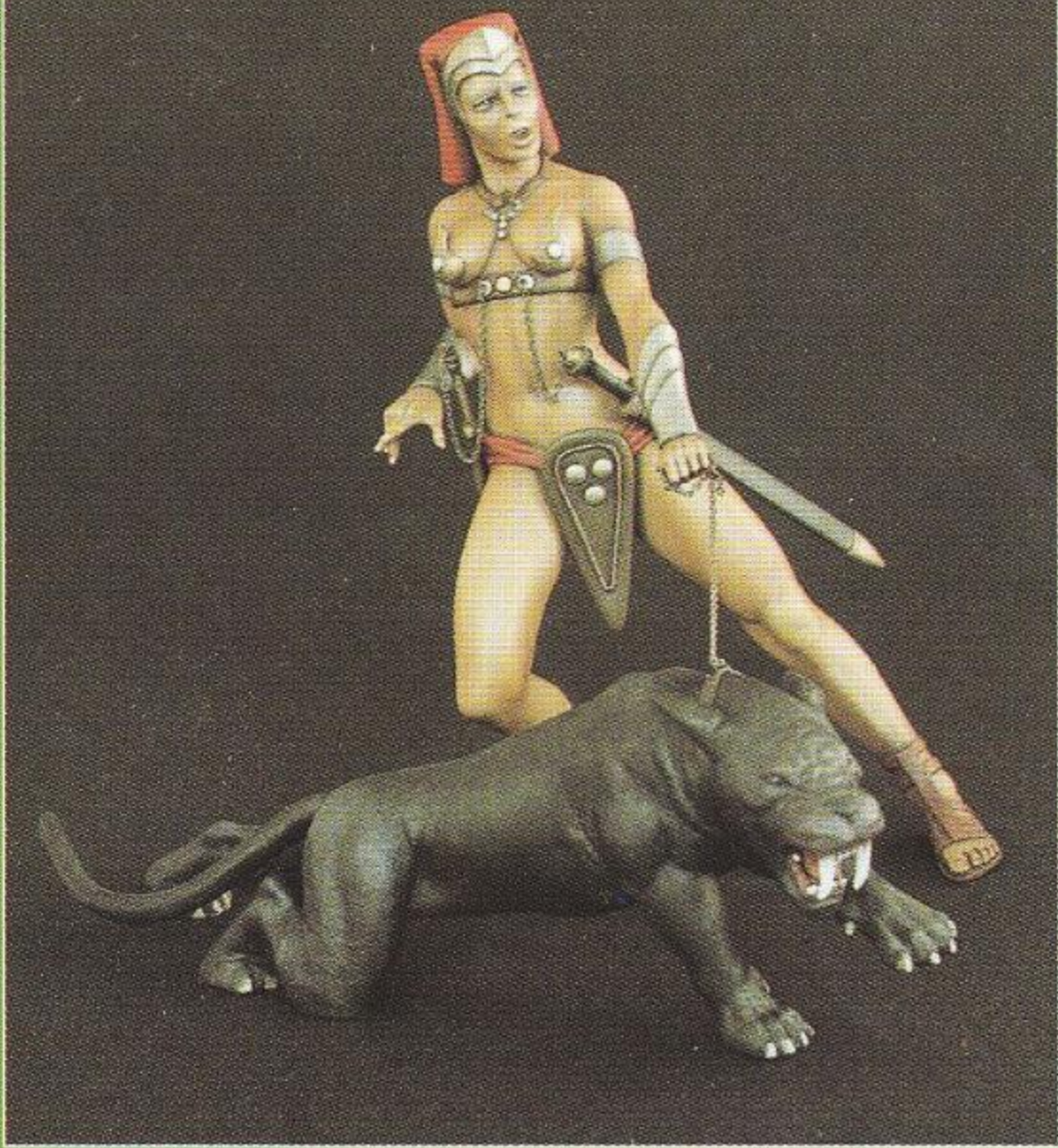
TOP RIGHT :  
OFFICER OF CARABINIERS  
Rob HENDON U.K.  
120mm AMATI

TOP :  
MERRILL'S MARAUDERS  
R.E. DIXON U.K.

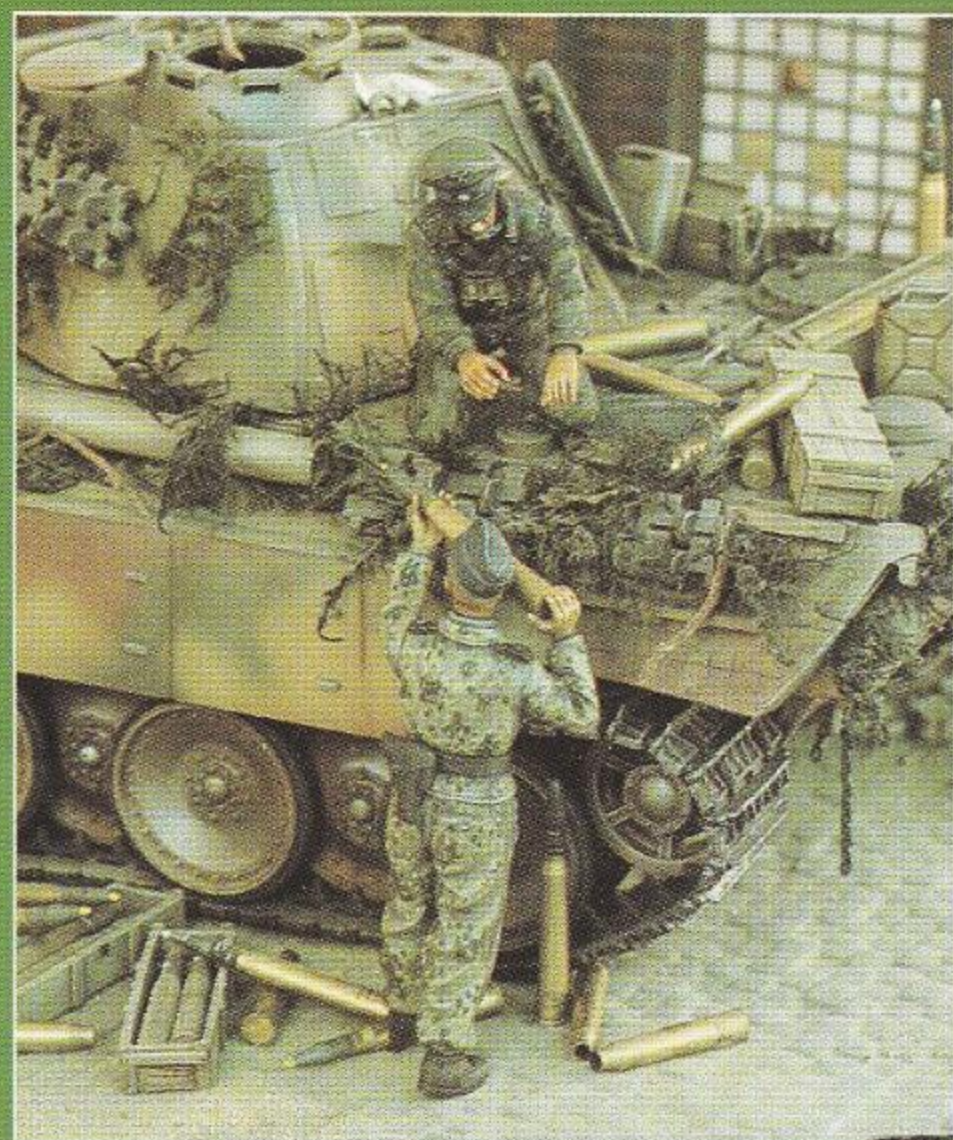
RIGHT :  
BEACH MASTER ASSISTANT  
1:35 VP FIGURE CONVERSION  
Stefan MUELLER  
HERDMARTENS  
GERMANY



1054 ZARLON PALACE GUARD 150mm



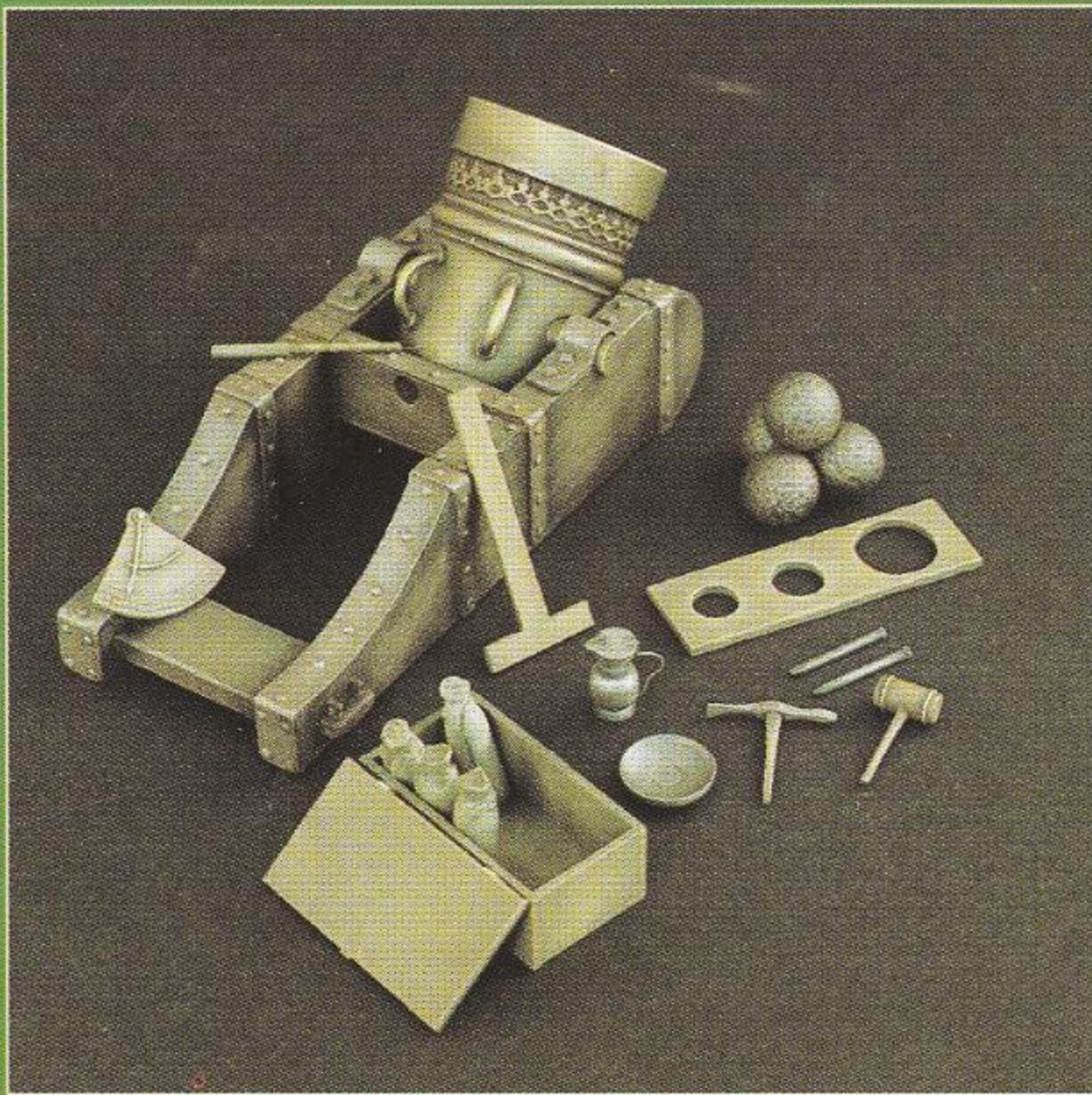
1049 TIGER I TRANSMISSION 1:35



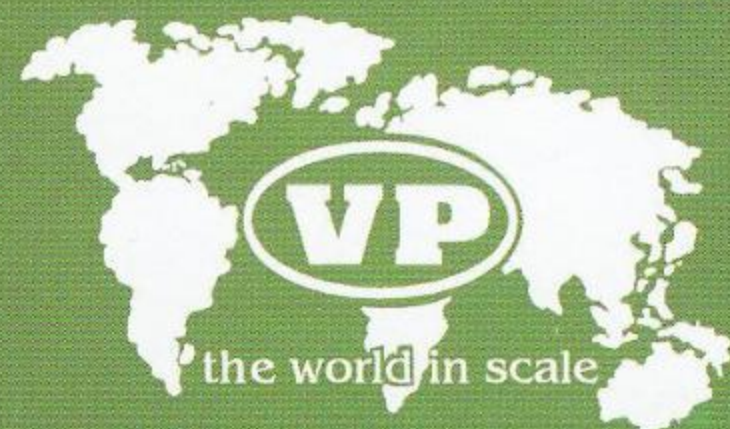
1055 GERMAN TANKERS AMMO SUPPLY 1:35

# SEPTEMBER 1995

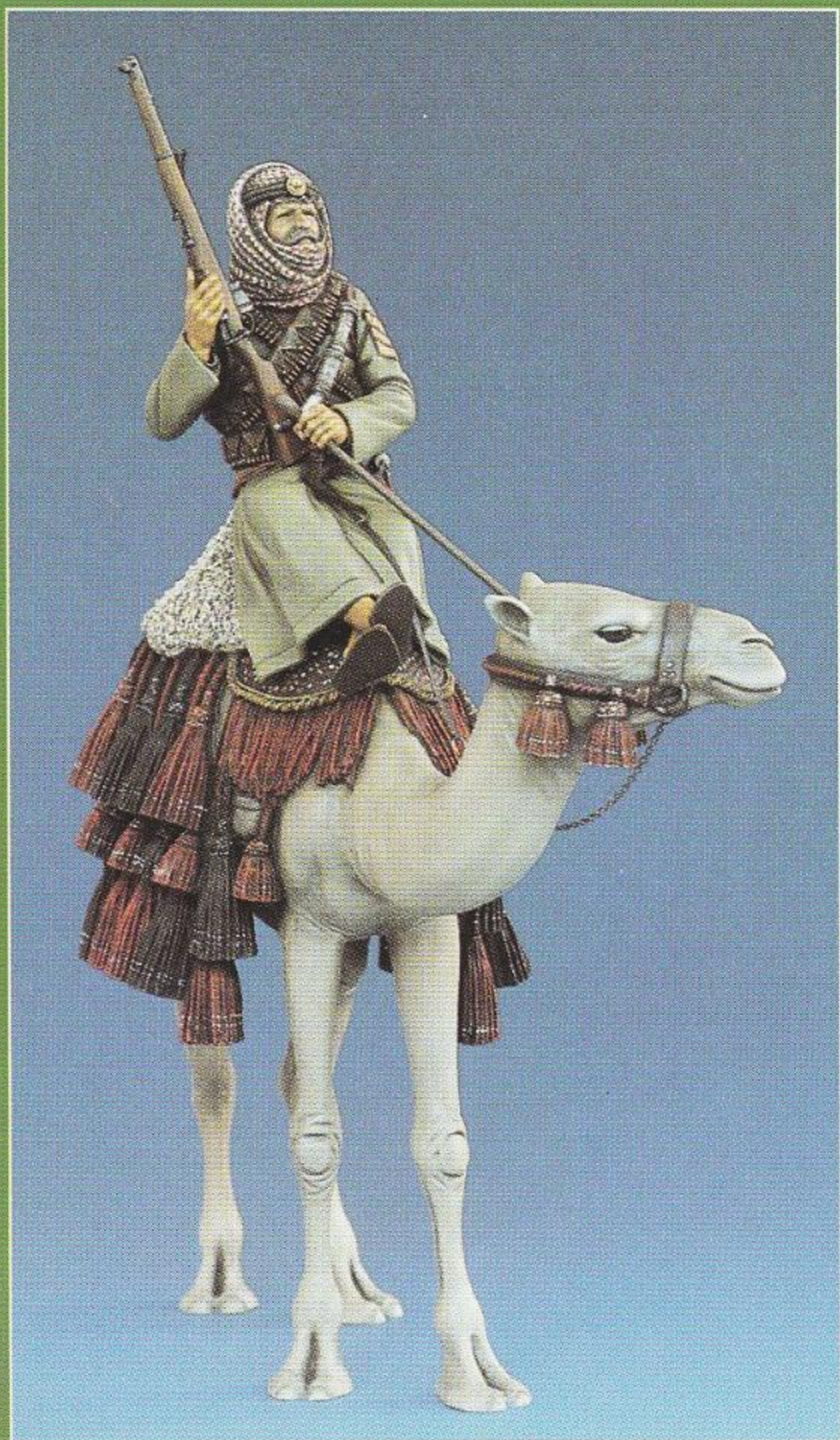
1052 MEDIEVAL MORTAR 16Th.C. 120mm



1051 GERMAN STUG OFFICER RUSSIA 1943 120mm



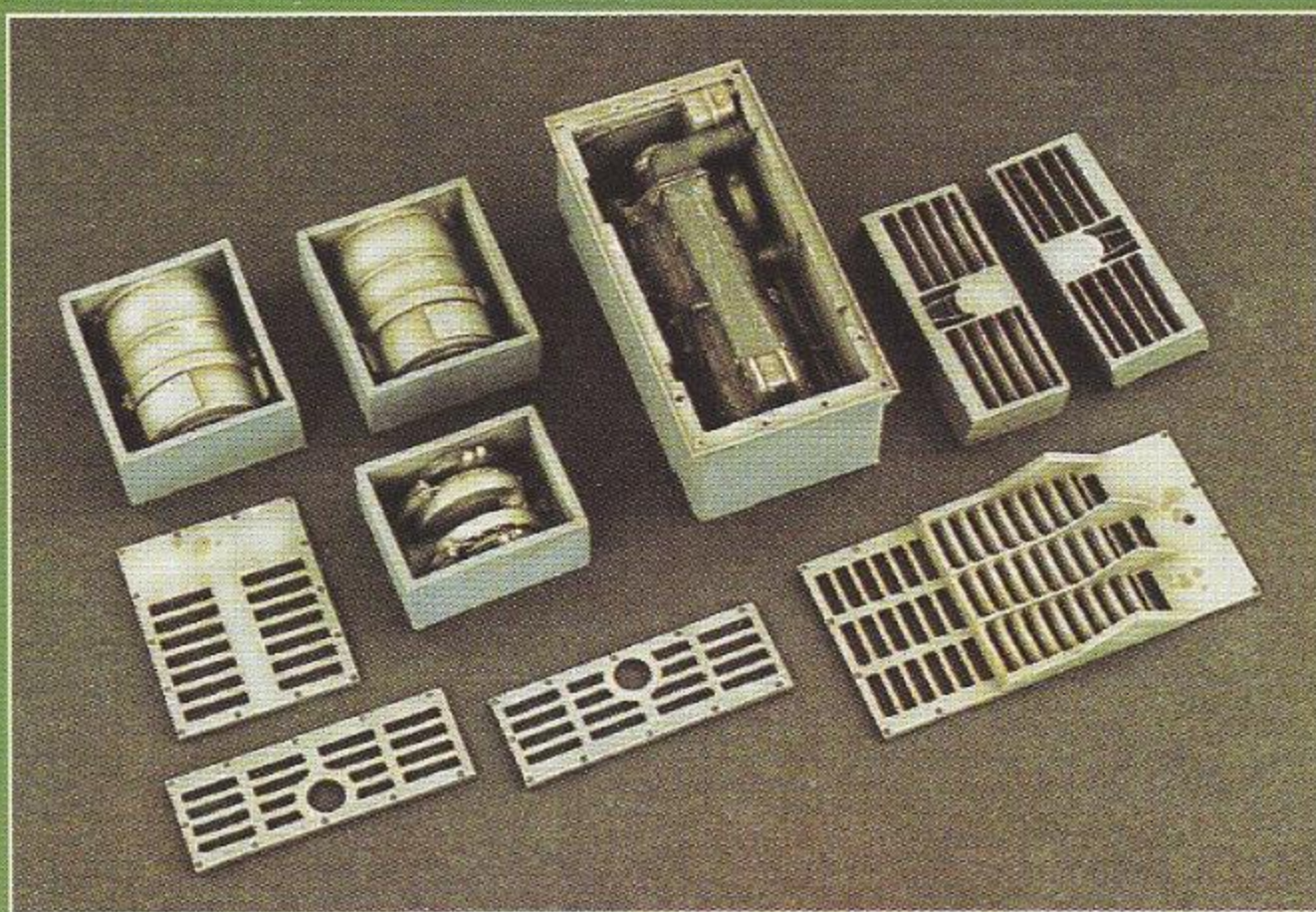
1058 NAPOLEONIC EAGLE CREST NO SCALE



1050 DESERT PATROL 120mm



1056 COFFEE BREAK OSTFRONT 1:35



1053 MAUS ENGINE & TRANSMISSION COMP. 1:35



1057 NAPOLEON I St. 120mm



# MISSED ONE ?

## VERLINDEN PRODUCTIONS MODELING MAGAZINE

VERLINDEN PRODUCTIONS  
ONDERNEMERSSTRAAT 4  
2500 LIER BELGIUM

BACK ISSUES  
FROM YOUR  
DEALER  
OR  
DIRECT

